



Complete Streets Parkland Commission Presentation

Presenter:

Laurie Fucini-Joy
Urban Health Partnerships
Laurie@UrbanHS.com

Ricardo Gutierrez
Broward MPO
GutierrezR@browardmpo.org



What are Complete Streets?

- A Complete Street is a street where the entire right-of-way is planned, designed, and operated for all modes of transportation and all users regardless of age or ability.
- There is no singular design prescription for complete streets – each one is unique and responds to its community context.



Why Complete Streets?

- Provide Benefits:
 - Capacity
 - Equity
 - Public Health
 - Safety
 - Economic
 - Sustainability



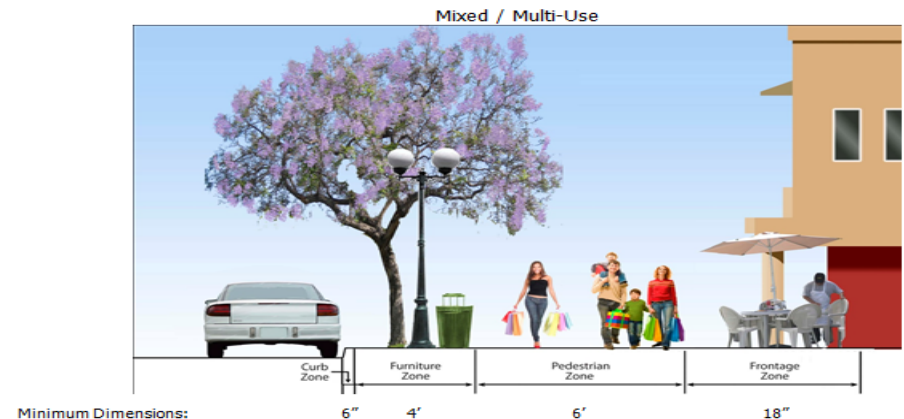
Capacity

- Complete streets can improve the efficiency and capacity of existing roads by moving more people in the same amount of space.



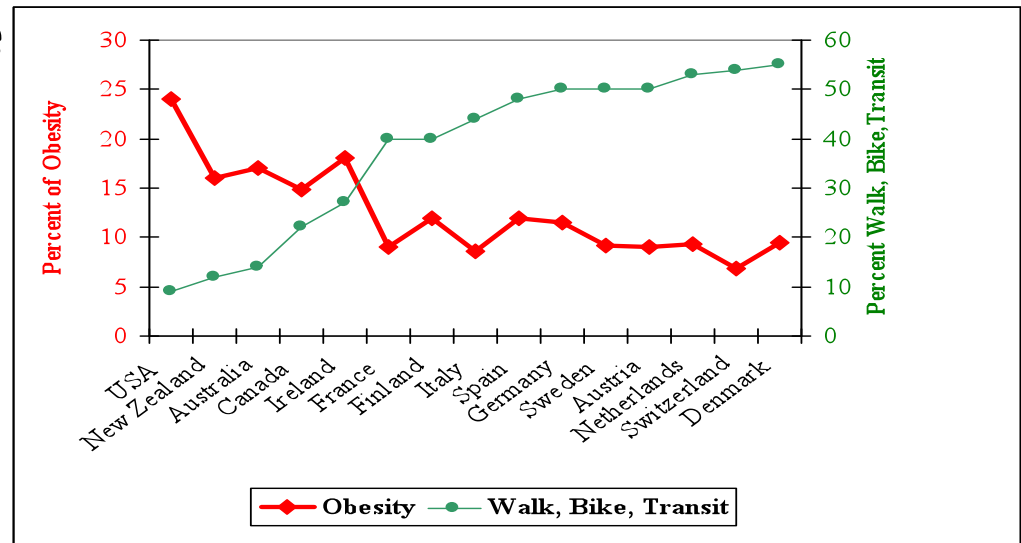
Equity

- Complete streets are for everyone. People of all ages, abilities, and income will have more options when making essential trips such as to work, school, the grocery store, or for healthy recreation.
- Studies have significantly found relationships between mobility options and impacts on human behavior.



Public Health

- Complete streets promote active transportation, which is walking, bicycling, accessing public transportation.
- Obesity is lower in places where people use active transportation.



Pucher, "Walking and Cycling: Path to Improved Public Health," Fit City Conference, NYC, June 2009

Safety

- Adding complete streets elements to existing roadways improves safety for all users.
- Making these travel choices more convenient and attractive means making them safer.



Economic

- Complete streets gives people more control over their expenses.
 - Americans spent 18 cents of every dollar on transportation
 - The poorest fifth of families spend more than double that figure
 - One-point increase in the 100-point Walk Score scale is associated with an increase in home value of \$500 - \$3,000.



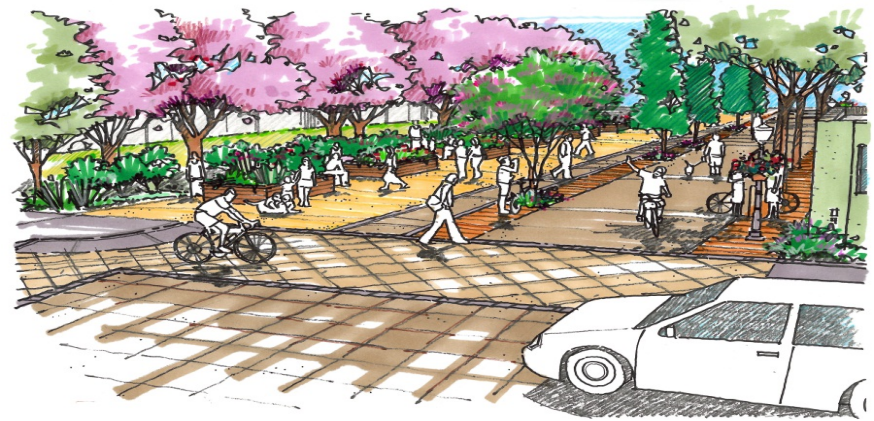
Sustainability

- Complete Streets supports sustainable transportation vision established by the MPO and its constituencies.
- Broward Residents
 - 73% feel they have no alternative to their car
 - Balanced infrastructure can cause 5-10% shift to non-motorized trips
 - Walking and biking are zero emission activities



What are the features of Complete Streets?

- Provide transportation options for people of all ages, physical abilities, and income levels
- Serve the land uses adjacent to the street
- Enhance the safety and security of streets
- Maximize infiltration and the reuse of stormwater
- Efficiently use the total amount of paved area to accomplish Complete Street goals!



A Menu of Complete Street Improvements

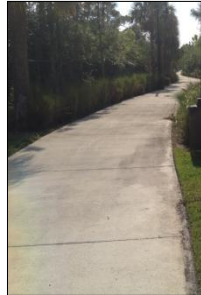
- Bike Lanes
- Multi-use trails/sidewalks
- Curb extensions/median crossings
- Crosswalks
- Lighting
- Traffic Circles/Roundabouts
- Median Islands
- On-street parking
- Shading/Trees
- Cycle Tracks
- Bus Shelters
- Road diets

Complete Street Elements

Indicate the street treatments that you would want in your community and your least favorite improvements.



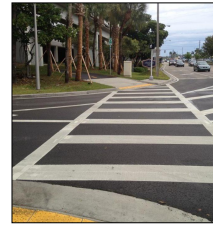
Bike lanes



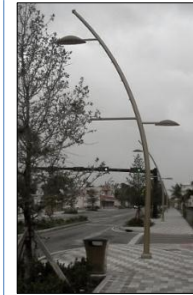
Multi-use recreational trails



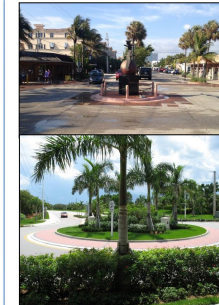
Curb extensions / Staggered median crossings



Crosswalks



Lighting



Traffic circles / Roundabouts



Median islands



On-street parking



Shading/trees



Cycletracks



Bus shelters

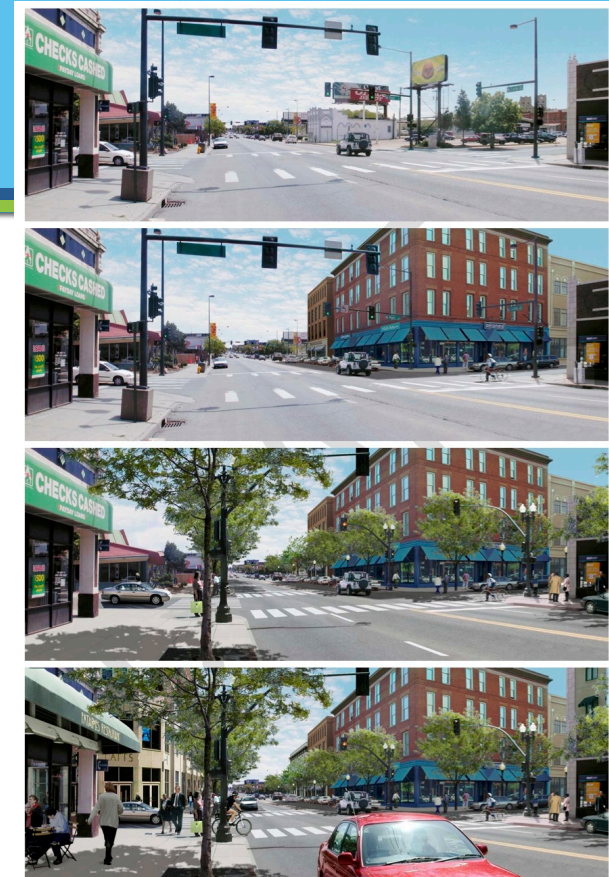


Road Diets

Traffic circle image by Alena Alberani. Curb extension image by Dan Burden. Lighting and on-street parking image by Urban Health Associates. Remaining images provided by Kimley Horn and Associates.

The Challenge

- The challenge for local governments with too many least favorite streets is to transform them into most favorite, complete streets
 - Re-establish Street Networks
 - Rethink Land Use
 - Setting Priorities and Phasing

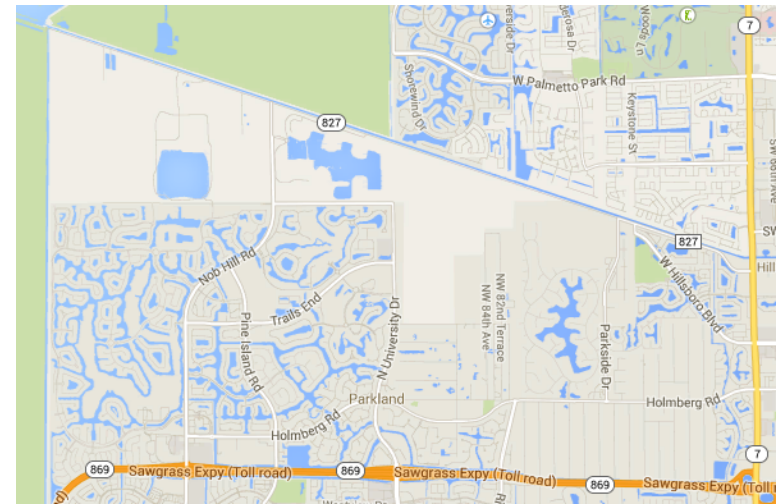


What Exists In Parkland?

- Parkland Comprehensive Plan
 - Land Use, Housing, and Transportation Elements
 - Updating Goals, Objectives, and Policies
- Code of Ordinances
 - Land Development Code
 - Development Review Procedures
 - Updating the Engineering Standards

Next Steps to Implement Complete Streets?

- Much of suburbia will have to change in order to thrive and meet the health, environmental, and economic challenges
- Local governments should enact policies through ordinances or resolutions
- The Broward Complete Street Guidelines layout the vision and goals of implementation
- Local governments should adopt new complete streets design guidelines





**Thank you for your time.
Questions?**

Presenter:
Laurie Fucini-Joy
Urban Health Partnerships
Laurie@UrbanHS.com

Ricardo Gutierrez
Broward MPO
GutierrezR@browardmpo.org

