

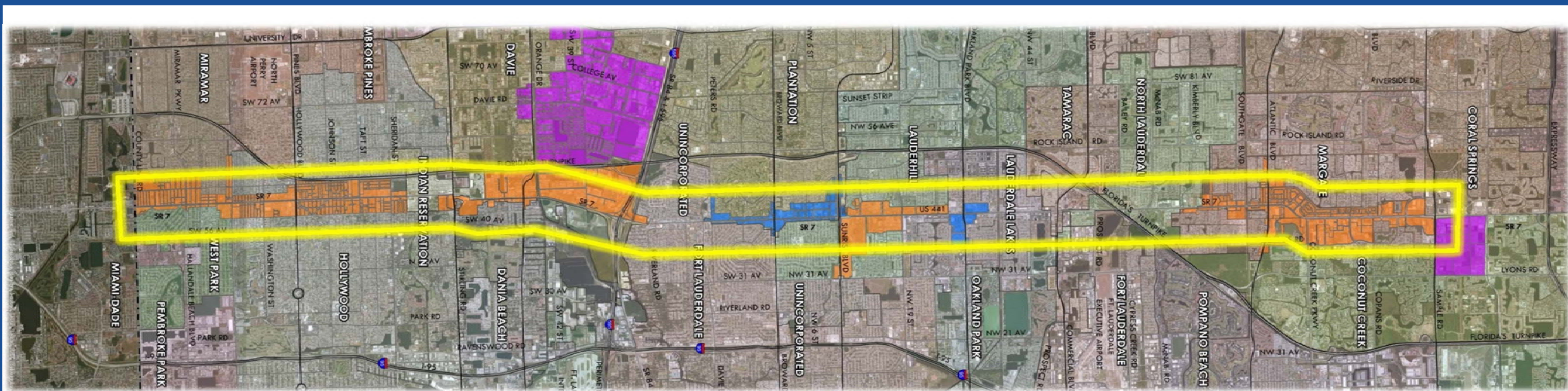
SR 7 MULTIMODAL IMPROVEMENTS PLANNING STUDY

Project Overview



Study Area

- South of Miami/Dade County Line to North of Sample Road
- Approximately 1/2 Mile on either side of SR 7 (or logical extents)
- Includes consideration of operations at Golden Glades Intermodal Center



Project Advisory Committee



Broward MPO



Broward County Transit



Broward County
Traffic Engineering Department



FDOT District 4
(Various Offices)



Miami-Dade Transit



Miami-Dade MPO



South Florida Regional
Transportation Authority



South Florida Regional
Planning Council

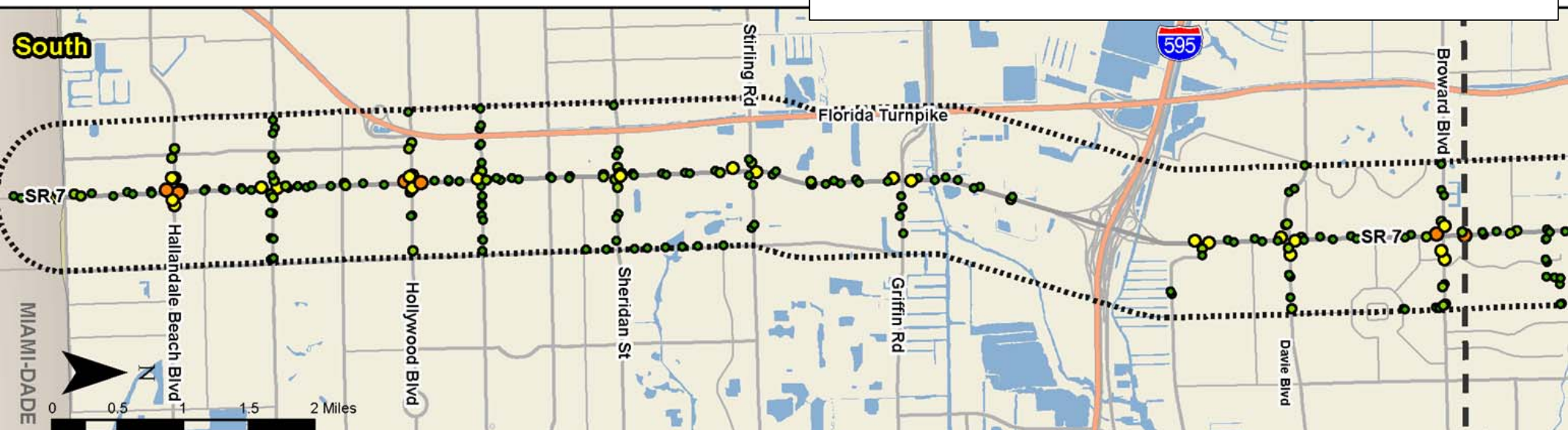
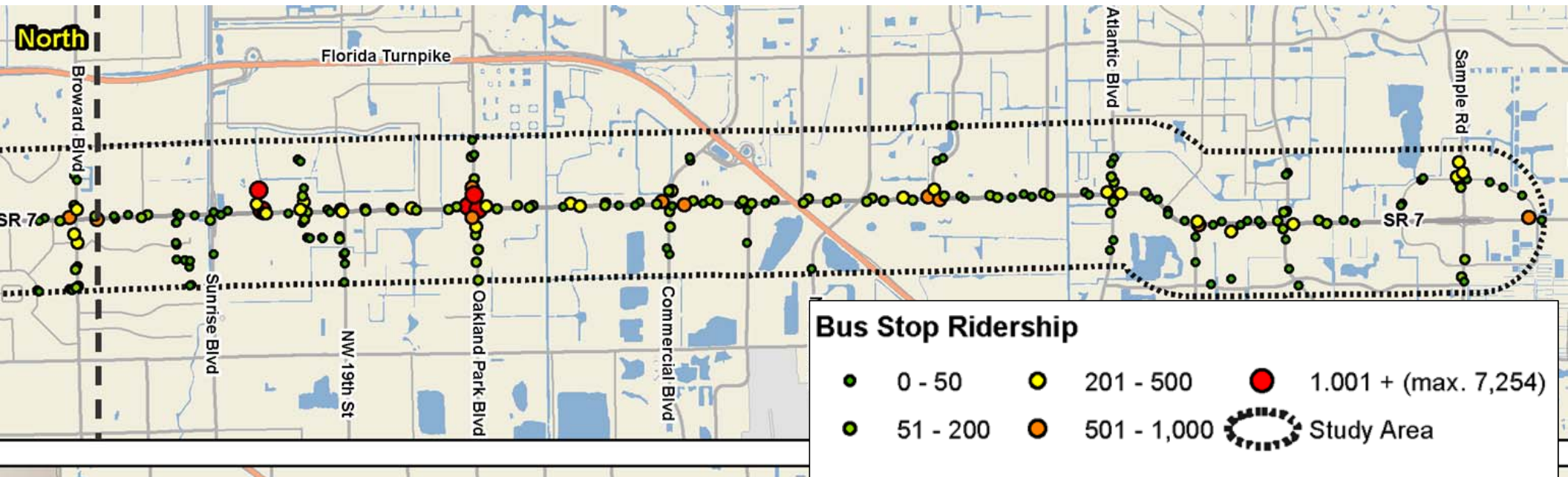
Working Groups

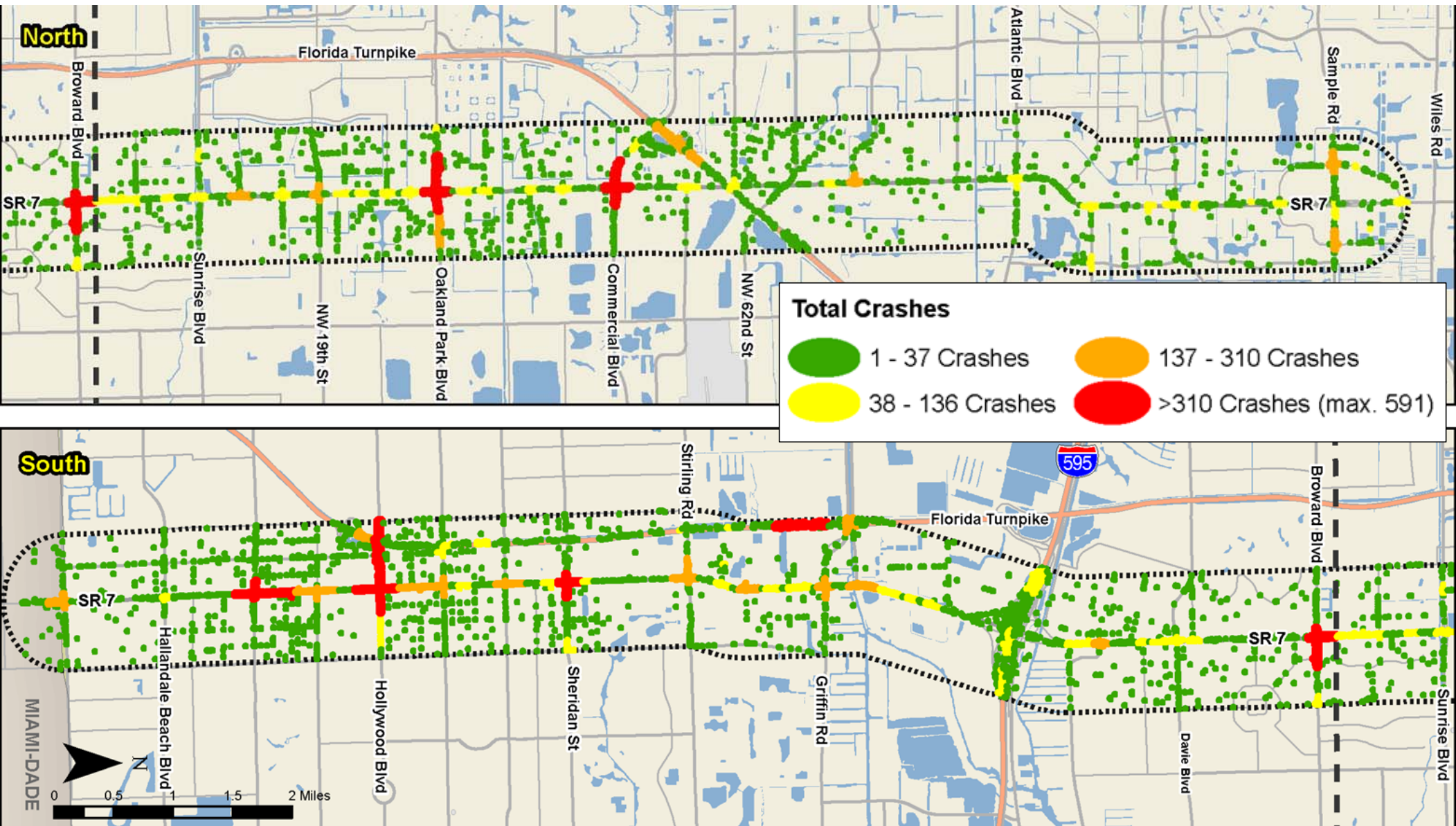
South	Central	North
Dania Beach	Fort Lauderdale	Coconut Creek
Davie	Lauderdale Lakes	Coral Springs
Hollywood	Lauderhill	North Lauderdale
Miramar	Plantation	Margate
Pembroke Park	Tamarac	
Seminole Tribe of Florida	Broward County	
West Park		

Study Purpose

- Identify congestion mitigation and safety improvements for all modes.
- Enhance transit rider, bicyclist, and pedestrian experience.
- Develop short-term multimodal improvements for implementation (5 years).
- Identify longer-term improvements for project development.
- Be consistent with National Environmental Protection Act.

- Identified as a regionally significant project in 2040 LRTP
- Over 20,000 transit riders a day
- Several congested intersections/roadway segments
- Several high crash locations, including bicycle and pedestrian crash clusters.





Working Group Meetings Common Issues

- Discussion of corridor preservation width
- Discussion of transit stop placement
- Intersection congestion/safety issues
- Infill and Redevelopment Activity – Especially in Northern Segment.

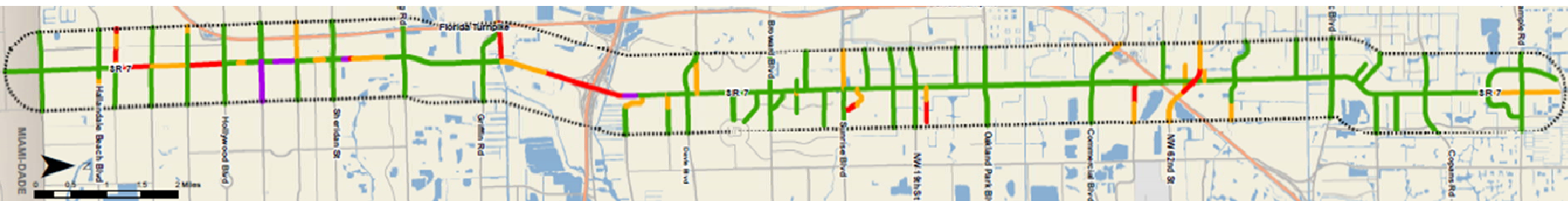


Hot-Spot Identification



- Bus Stop Activity
- Bicycle and Pedestrian Crash History

Multimodal Network Analysis

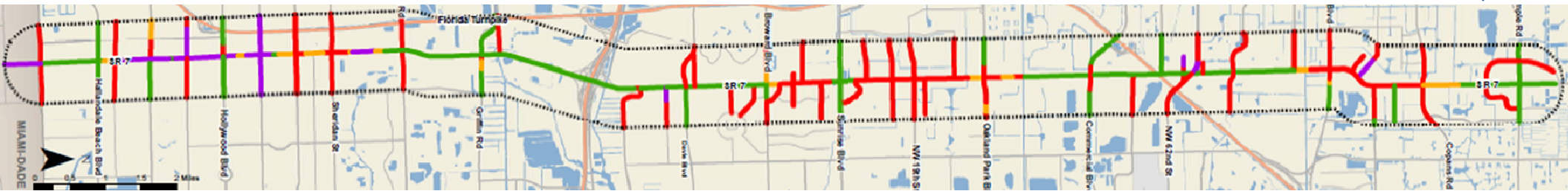


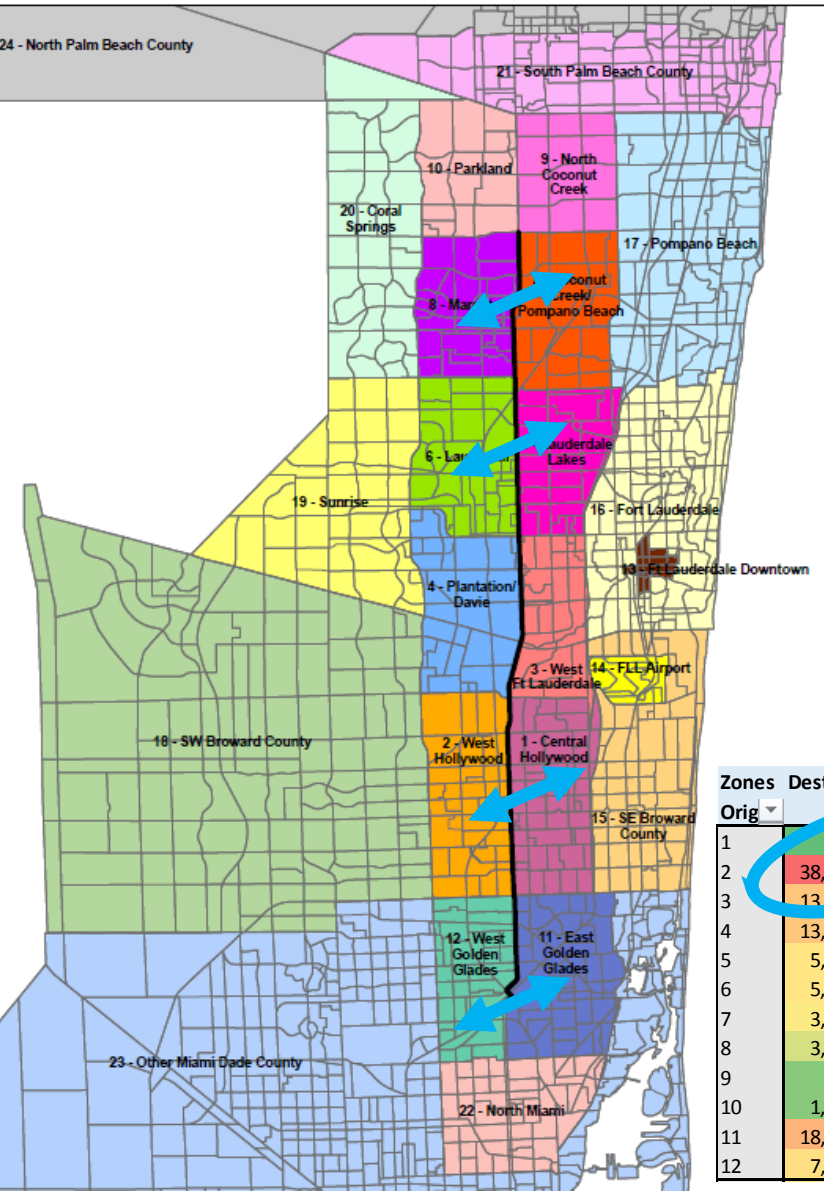
Sidewalk Network

- █ Complete Sidewalk Both Sides
- █ Complete Sidewalk One Side
- █ Incomplete Sidewalk
- █ No Sidewalk

Bicycle Network

- █ Bike Lane Both Sides
- █ Bike Lane One side
- █ Partial Bike Lanes
- █ No Bike Lane





Cell Phone O/D Data

- Uses same zone structure as prior FDOT survey
- Shows all travel demand associated with the corridor to identify possible markets.

Zones	Destinati	1	2	3	4	5	6	7	8	9	10	11	12
1	Orig	-	37,737.02	13,183.30	13,895.54	4,867.42	5,123.92	4,250.62	3,351.10	1,141.18	1,027.48	18,166.38	7,325.26
2		38,363.66	-	8,905.22	18,958.34	4,831.50	5,778.96	4,171.20	3,440.28	1,070.08	637.12	14,837.24	12,135.00
3		13,854.42	9,184.94	-	19,991.88	14,512.66	15,977.82	4,517.48	6,271.24	1,664.58	1,172.96	3,203.42	2,022.74
4		13,724.22	18,914.00	20,044.40	-	12,195.02	22,314.78	324.84	7,119.60	3,027.88	1,924.58	4,031.48	2,722.44
5		5,798.00	5,230.28	13,922.90	12,616.54	-	31,308.44	5,207.28	19,068.50	4,076.24	3,834.20	2,502.04	3,160.48
6		5,883.70	5,953.86	14,826.96	21,725.50	30,864.24	-	12,830.00	27,950.26	3,927.66	3,212.44	3,342.50	2,303.24
7		3,991.26	4,048.06	4,979.12	6,397.00	15,382.34	13,197.76	-	31,762.50	1,388.78	10,344.40	1,903.66	1,100.86
8		3,014.10	2,820.80	6,178.48	7,169.34	17,405.92	27,892.00	29,487.24	-	13,257.80	18,166.74	1,214.10	998.92
9		996.22	1,086.38	1,411.64	2,782.24	3,307.80	3,663.70	16,326.64	17,243.92	-	11,319.04	530.46	503.54
10		1,025.18	828.38	1,077.14	1,950.02	3,297.28	3,471.56	10,230.52	18,037.72	11,098.86	-	20,194.00	301.94
11		18,716.12	15,340.94	3,614.30	4,175.60	2,900.96	3,247.70	1,696.92	1,498.84	590.08	185.87	-	27,503.66
12		7,441.72	12,755.24	2,026.06	2,514.58	3,285.40	2,159.70	1,314.40	976.80	528.42	234.00	26,908.96	-

Public Engagement

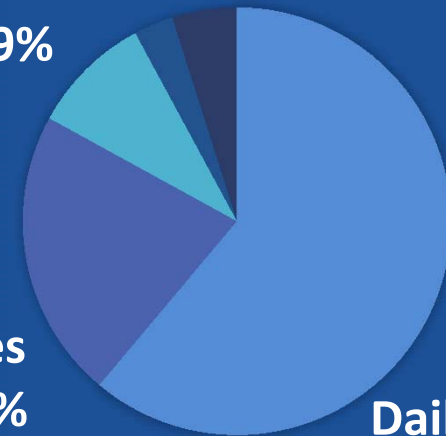
- Intercept Surveys at Hot-Spots
 - AM and PM Time Periods
 - Nearly 1,200 Surveys Completed
 - 44% of respondents were transferring
- Presentations to Civic Associations and Business Groups
- Project Website:
 - www.ImproveSR7.org
- Telephone TownHall Meeting Held Thursday November 12th

Transit Use of Survey Participants

**A Few Times
a Month 9%**

**A Few Times
a Week 22%**

Daily 61%



- Complete ADA Assessment
- Multimodal Improvements at Hot-Spot Intersections
- Multimodal Network Enhancement Projects
- Short Term Safety Recommendations
- 2nd Round of Working Group Meetings
- Begin Project Vetting and Implementation Planning
- Present Recommendations to Committees and Board in May/June

• Project Team Emails

- Roxana Ene, Broward MPO Project Manager:
- Demian Miller, Tindale Oliver Program Manager:
- Laura Everitt, Tindale Oliver Program Manager:

EneR@BrowardMPO.org

Dmiller@TindaleOliver.com

LEveritt@TindaleOliver.com

• Project Hotline: (954) 952-9055

(Between 9 – 5 weekdays, or leave a message)

• Project Website: www.ImproveSR7.org