

# *brightline*

Brought to you by

**ALL ABOARD  
FLORIDA**

Tri-Rail Coastal Link Update and Conversation  
Broward County Convention Center  
December 16, 2016

François Illas, Vice President  
Florida East Coast Industries



# INTERCITY PASSENGER RAIL & REAL ESTATE DEVELOPMENT

- ✓ First private passenger rail service
- ✓ Designed to serve tourists, business travelers and Florida residents
- ✓ Stations and real estate located in key, downtown areas



ORLAND - Phase 2  
(3 hours)



WEST PALM BEACH  
(1 hour)



FORT LAUDERDALE  
(30 minutes)



DOWNTOWN MIAMI

# NEW TRAINS FOR A NEW EXPERIENCE



## Five 4-Car Train Sets

(~240 Passengers)



**SELECT Car**  
50 guests

**SMART Cars**  
62 guests each



### COMPETITIVE

- Priced comparable to a car or rideshare
- Flexible ticketing



### CONVENIENT

- Consistent schedule, 365 days/year
- Connected to local transportation first / last-mile connections



### COMFORTABLE

- Custom crafted leather seating in multiple configurations
- Reserved seating in all cars



### CONNECTED

- Complementary robust high-speed internet



*brightline*

TESTING UNDERWAY IN CALIFORNIA

# INFRASTRUCTURE IMPROVEMENTS

Enhancing Historical Infrastructure Backbone



ADDED CAPACITY

MODERNIZED SIGNALS CROSSING & COMMUNICATIONS

ENHANCED SAFETY

QUIET ZONES



Safer. Better. Quieter.

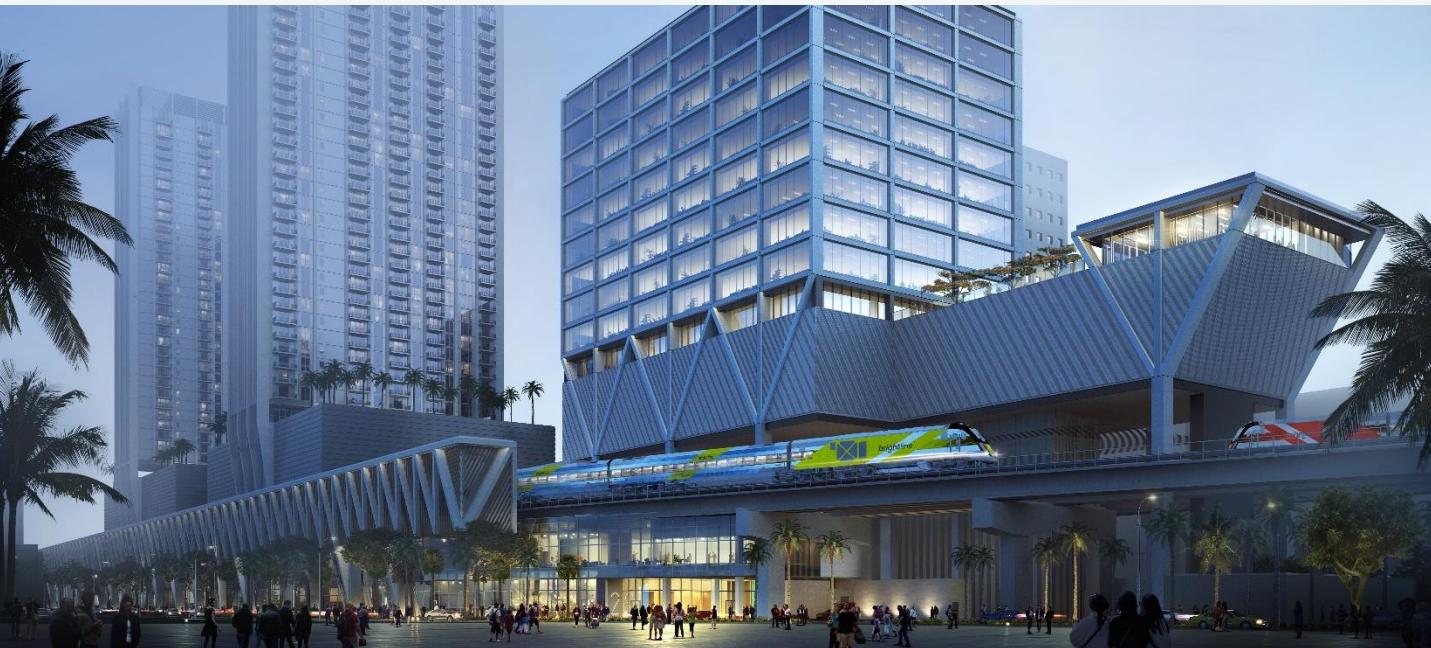
*brightline*

*brightline*

NEW STATIONS BECOME DOWNTOWN TRANSIT HUBS



MEMORABLE ARCHITECTURE



AMENITIES



LOBBY



WAITING AREAS

*brightline*



MIAMICENTRAL



MIAMICENTRAL<sup>2</sup>

Regus ERNST & YOUNG

*brightline*





## Over 10 Million!

PROJECTED ANNUAL PASSENGERS CONNECTED AT MIAMI STATION



**2+  
MILLION**  
Via Brightline



**1.9  
MILLION**  
Via Tri-Rail



**4  
MILLION**  
Via Metrorail



**2.6  
MILLION**  
Via Metromover

Miami Station

Miami Station adjacent

*\* All ridership numbers are projections estimated to 2020*

*Directly linking with existing transit options  
to create new transit hubs*

# Monger

BY THE VOLTAGGIO BROTHERS

MONGER

FRUIT BREAD PASTRY CHEESE

BEEF

PORK

LAMB

POULTRY

CHARCUTERIE

OYSTERS

## MEAT

Monger

Central Fare

# MIAMICENTRAL





MIAMICENTRAL PROGRESS

*brightline*



MIAMICENTRAL PROGRESS

brightline



3MIAMICENTRAL PROGRESS

*brightline*

# INTEGRATION OF COMMUTER RAIL



*brightline*

OVERBUILD  
PARKING  
80'

PLATFORM E  
TRI-RAIL

PLATFORM D  
TRI-RAIL

PLATFORM C  
Brightline

PLATFORM B  
Brightline

PLATFORM A  
Brightline

TRACK 5

TRACK 4

TRACK 3

TRACK 2

TRACK 1

PLATFORM  
50'

RETAIL

RETAIL

Brightline LOUNGE

MEZZANINE  
20'6"

Brightline LOBBY

RETAIL

GROUND

*brightline*



*brightline*



FORT LAUDERDALE STATION



FORT LAUDERDALE PROGRESS

*brightline*





FORT LAUDERDALE PROGRESS

*brightline*



WEST PALM BEACH STATION



SOUTHEAST VIEW



## Downtown living *West Palm Beach*

---

Apartments and parking structure under development

- 290 units
- 24 floors
- Approx. 790 parking spaces
- Ground floor retail



## Running Repair Facility *West Palm Beach*

---

Completed and ready to receive first Brightline trainset

50 Siemens and Brightline employees

# PROJECT TIMELINE

## 5-YEARS IN THE MAKING A SMARTER WAY TO TRAVEL LAUNCHING SUMMER 2017

