



DESIGN AND CONSTRUCTION MANAGEMENT

LINEAR PARK & MOBILITY HUB IMPROVEMENTS

October 25, 2021

This meeting is being recorded; a copy of the recording will be made available on the City's website after the meeting.

Reunión pública

Para obtener más información, por favor contáctenos:

Teléfono: 954-921-3410 ext. 6030

Correo electrónico: jcortes@hollywoodfl.org

Reyinyon piblik:

Pou plis enfòmasyon tanpri kontakte nou:

Telefòn: 954-921-3410 ext. 6032

Imèl: rdamas@hollywoodfl.org

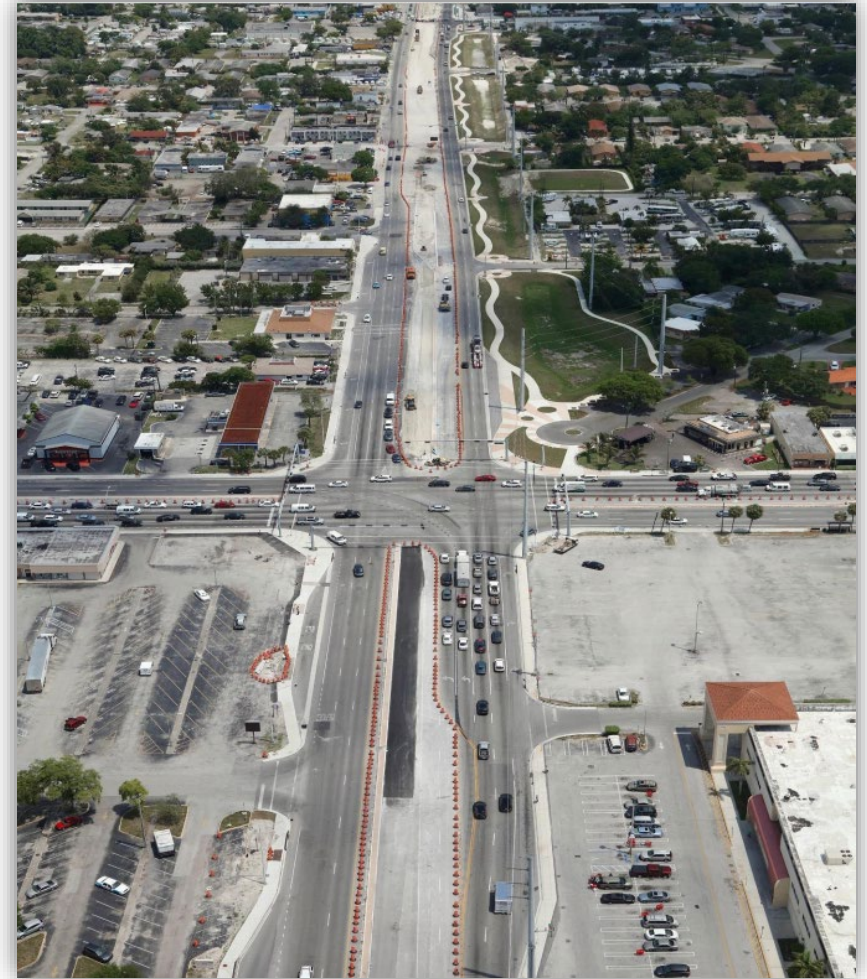


PUBLIC MEETING FOR LINEAR PARK & MOBILITY HUB IMPROVEMENTS

Meeting Date: Monday, October 25, 2021

Goals of the Meeting:

- To update the public on the project status and final design.
- To answer questions regarding the construction phase of the projects.



PRESENTATION OVERVIEW

INTRODUCTIONS

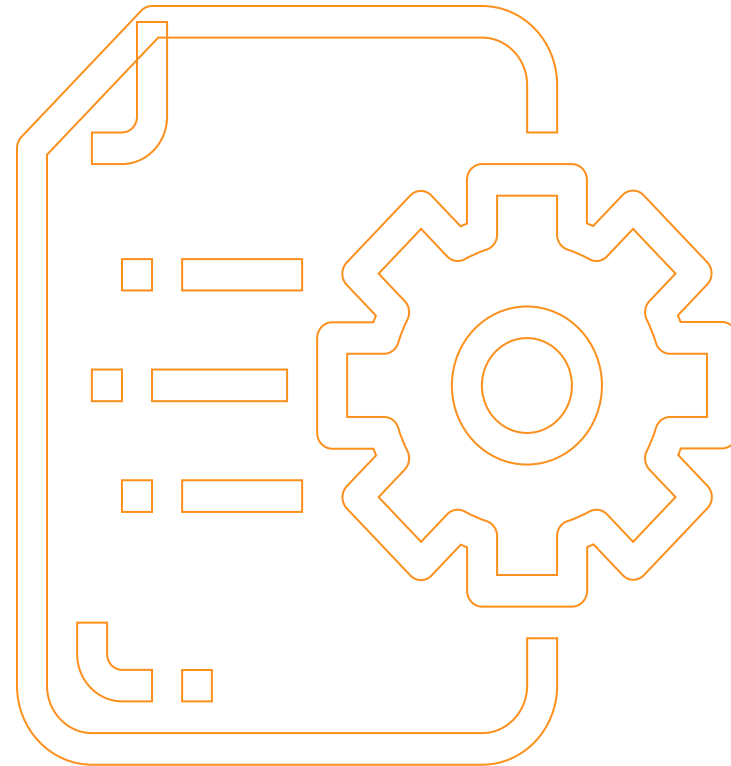
- City Staff
- Design Team
- Broward MPO Staff

PROJECT PROGRESS

- Site Location and Details
- Design Status
- Estimated Construction Schedule

PUBLIC FEEDBACK

- Questions and Comments



TEAM INTRODUCTION



Rudy Damas

Project Manager

Design and Construction Management

Jose Cortes

Director

Design and Construction Management

Ricky Engle

Director

Parks, Recreation and Cultural Arts

David Vazquez

Assistant Director

Parks, Recreation and Cultural Arts



Expect More. Experience Better.

Kimley-Horn & Associates, Inc.

Civil, Architecture, Planning

Marissa Maring, PE

Project Manager



Chadwick Blue

Mobility Initiatives

Transit Section

Project Coordination Manager

PROJECT HISTORY / TIMELINE

2012

The Linear Park was created as a result of the 441/SR-7 road widening from five lanes to six lanes to provide better pedestrian amenities, improved landscaping, and improved bus shelters along the 441/SR-7 corridor and at the Hollywood Blvd and 441/SR-7 intersection.

2013 – 2014

With City approval, Linear Park and hardscape plans were developed and coordinated with Florida Department of Transportation (FDOT), Florida Power & Light (FPL), Broward County Transit (BCT), landscaping and other key agencies.

The Broward Metropolitan Planning Organization (Broward MPO) commissioned and produced the Hollywood/Pines Corridor Project report, and the 441/SR-7 & Hollywood Boulevard intersection was designated a “Gateway Hub”.

2015

Construction of the FDOT 441/SR-7 roadway widening project officially began.

2019

Roadway construction completed

2020

The Broward MPO was awarded \$900,000 for the 441/SR-7 Mobility Hub by the Federal Transit Administration (FTA) on February 12, 2020. The City and the Broward MPO executed the sub recipient agreement on May 6, 2020.

2021

The City held a public meeting on February 2021 to discuss the scope of work and the schedule. The City Commission approved the playground purchase in September 2021.



Consultant Selection Overview

- Under the “Civil/Landscape Architecture/Planning Engineering Services, DS 18-014”, Kimley-Horn & Associates, Inc. provided a proposal for all required professional engineering services related to the Mobility Hub and Linear Park projects. The Mobility Hub is located at the corner of Hollywood Blvd. and 441/State Road 7; the Linear Park extends along the east side of 441/State Road 7 from Hollywood Blvd. to Fillmore Street.
- City of Hollywood negotiated the scope and fees with Kimley-Horn to provide professional engineering services for a lump sum of \$85,250 for the Mobility Hub and \$40,500 for the Linear Park improvements.



Hollywood Mobility Hub

Broward Metropolitan Planning Organization
Chadwick Blue
Project Coordination Manager



WHO IS THE BROWARD MPO?

- A federally chartered entity responsible for transportation decision making in the Broward region
- Influence the expenditure of federal and state transportation funds at the regional level
- MPO Board
 - 31 municipalities
 - Broward County
 - Broward County School Board
 - South Florida Regional Transportation Authority (Tri-Rail)
- Develop plans, conduct studies, establish initiatives and programs

Our Mission:

To collaboratively plan, prioritize, and fund the delivery of diverse transportation options.

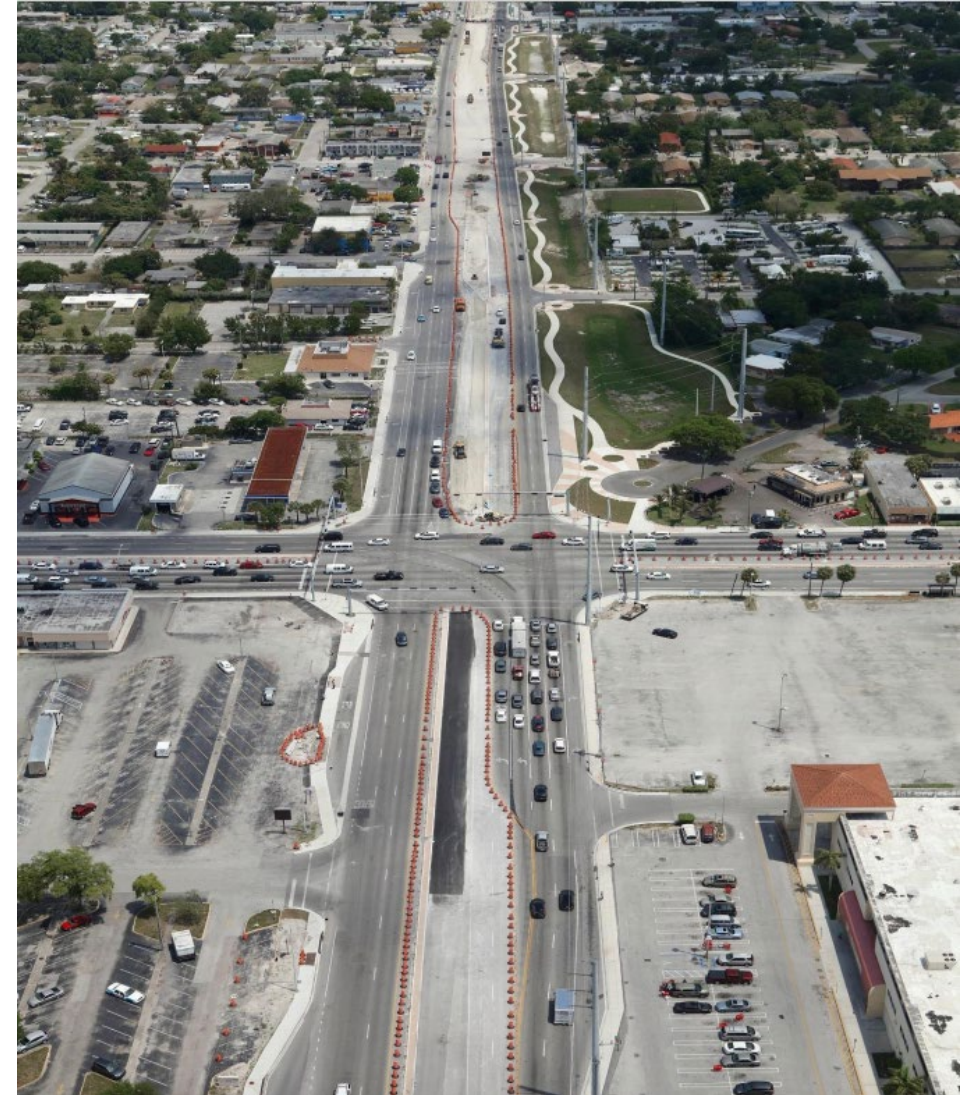
Our Vision:

Our work will have measurable positive impact by ensuring transportation projects are well selected, funded, and delivered



SR-7 MULTIMODAL IMPROVEMENTS CORRIDOR STUDY

- Hub location identified through in Hollywood/Pines Blvd Corridor Project 2013
- Master Plan was completed January 2018.
- Mobility
 - Encourage/promote multimodal travel
 - Facilitate easier use of transit system
- Safety
 - Increase safety of all users
- Place making
 - Activate the public realm
 - Support (re)development efforts
- Broward MPO providing \$900,000 of FTA Funding for Design & Construction of the Hollywood Mobility Hub.



Hollywood Mobility Hub

Kimley-Horn and Associates, Inc.

Marissa Maring, P.E.

Project Manager

Kimley»»Horn

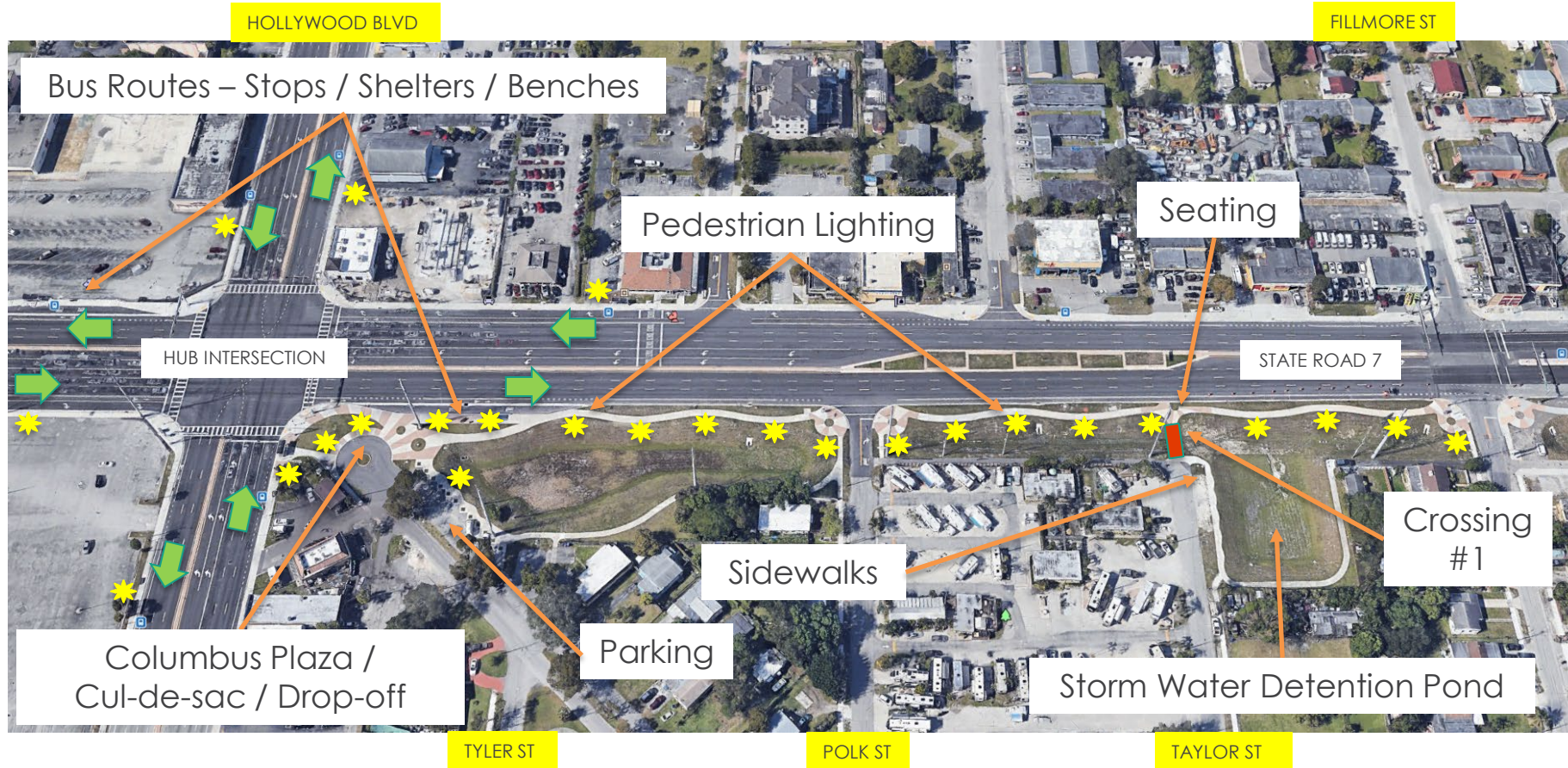
Expect More. Experience Better.

MOBILITY HUB IMPROVEMENTS: BOUNDARIES & COMPONENTS

Legend

 Pedestrian Bridge

 Streetlight



← Linear Park: Hollywood Blvd to Fillmore St = 1/4 mile →

MOBILITY HUB IMPROVEMENTS: SCOPE OF WORK

At the four corners of the 441/State Road 7 and Hollywood Boulevard intersection, and extending from the north east corner to Fillmore Street.

Hub Components

MOBILITY HUB IMPROVEMENTS SCOPE:

- Bus Shelters
- Path Lighting
- Pedestrian connectivity via culvert crossing at Taylor Street
- Highly Visible Patterned Crosswalks at the intersections
- Columbus Cul-De-Sac - Parking/ Lighting



D-Series Size 0
LED Area Luminaire



LINEAR PARK IMPROVEMENTS: BOUNDARIES & COMPONENTS

Legend

 Pedestrian Bridge

 Streetlight



PIERCE ST BUCHANAN ST LINCOLN ST

← Linear Park: Hollywood Blvd to Johnson St = ½ mile →

Scope of Work

In addition to the Hub mobility improvements, a linear park was also created on the east side of 441/SR-7 to connect the Mobility Hub to the neighboring community from Hollywood Boulevard north to Johnson Street.

Kimley-Horn Scope of Services also includes:

- Path Lighting
- Pedestrian connectivity via culvert crossing at Pierce Street
- Hardscape improvement Plans along the Linear Park
- Feature Sign- Park sign Entrance
- Glenn Parkway- Parking/ Lighting

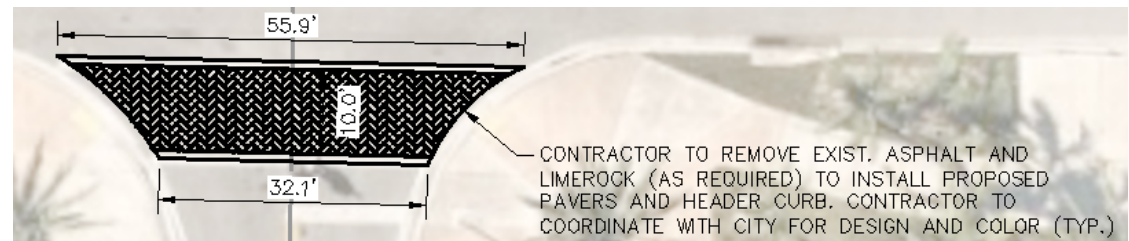
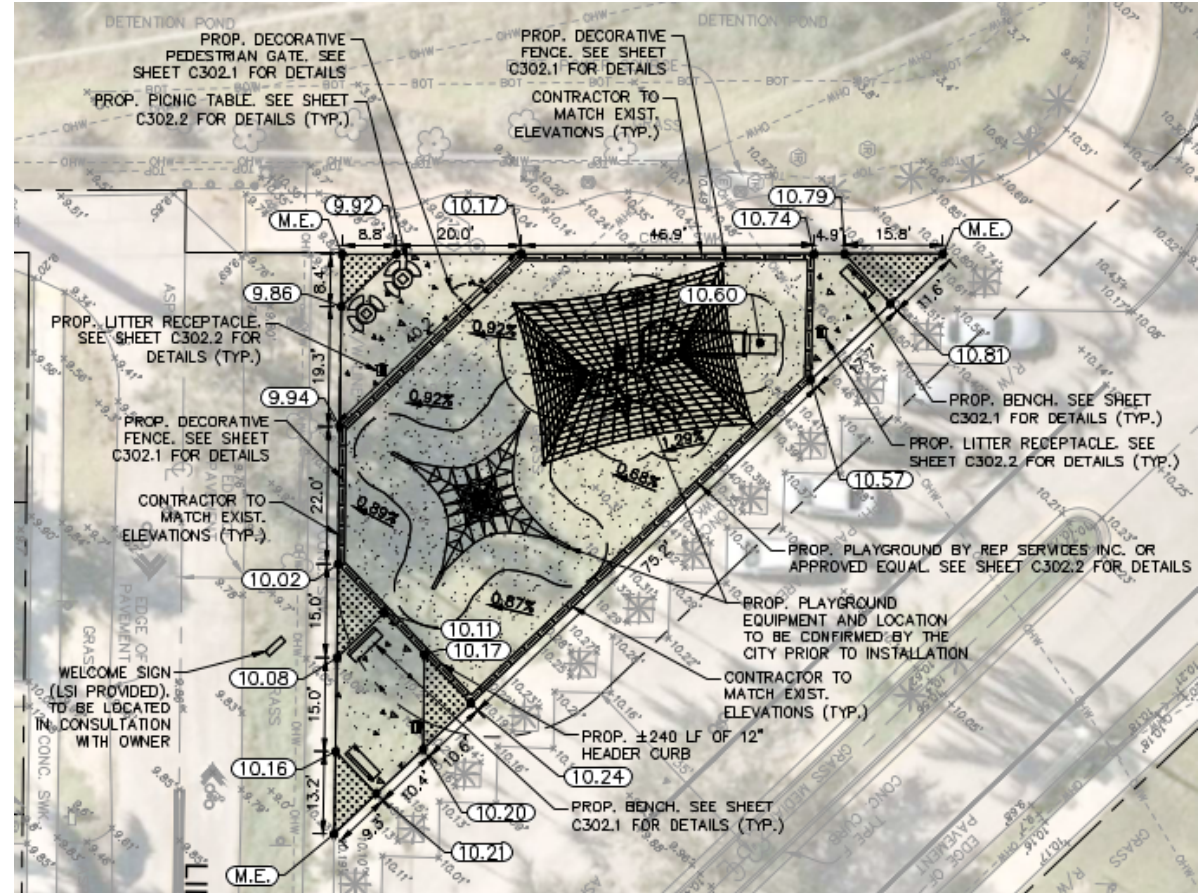
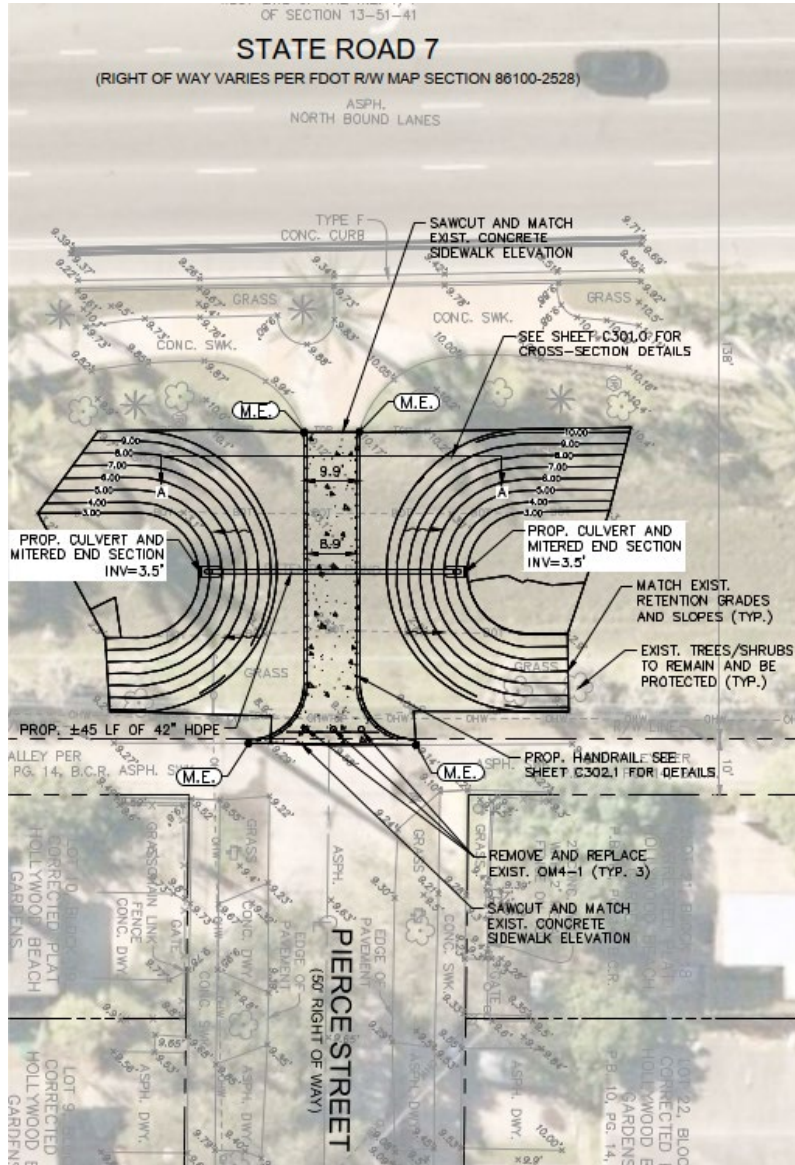
Elements



D-Series Size 0
LED Area Luminaire



LINEAR PARK IMPROVEMENTS: DESIGN



Playground Rendering



Linear Park



1152221-01-03-03 • 05.04.2021

©2021 Landscape Structures. All Rights Reserved.

Playground Rendering



Linear Park



1152221-01-03-01 • 05.04.2021

©2021 Landscape Structures. All Rights Reserved.

PROJECT TIMELINE

**DECEMBER
2020**

Project Kick-Off

**This is where we
are today**

**October
2021**

Public Outreach
Meeting

**December
2021**

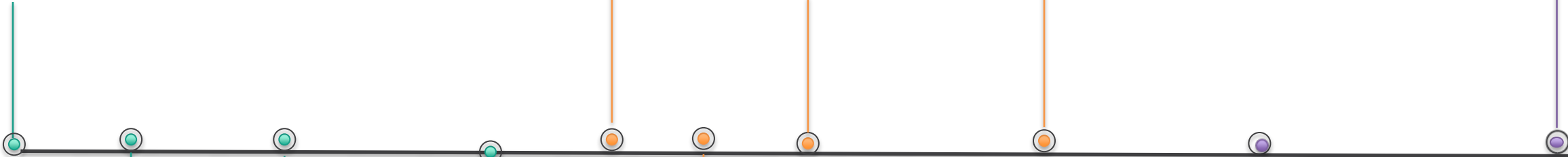
Bidding

**March
2022**

Contract
Awarded

**August
2022**

Construction
Complete



**FEBRUARY
2021**

Public Outreach
Meeting

**APRIL
2021**

60% Design
Development

**September
2021**

90% Design
Development

**November
2021**

Final Contract
Documents

**June
2022**

Construction Begins

Community Discussion



Questions and Answers