

# Celebrating 40 YEARS of transportation SOLUTIONS

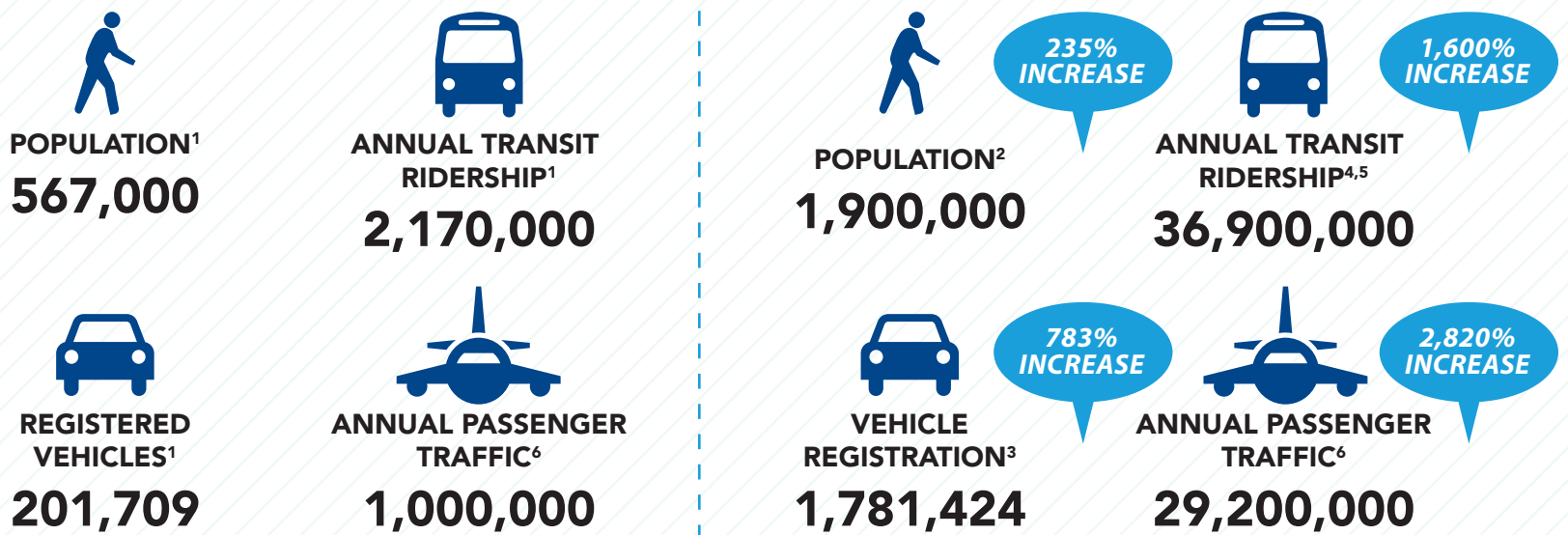


# Transportation FOCUS

Since its inception in 1977, the Broward Metropolitan Planning Organization, or MPO, has played a role in many of the transportation improvements that have changed the way we move within and through Broward County. Working with our transportation partners we've seen our transportation system grow and diversify to accommodate all modes of travel. Below is a snapshot of the transportation system changes over the past 40 years. We have also highlighted interesting facts and milestones in Broward's transportation history within this program.

THEN

NOW



## Milestones

### 1985 Plan

(Completed in 1968)

Identified need for transit along Florida East Coast (FEC) Corridor with stops at Hollywood, Fort Lauderdale, Pompano and Deerfield.

### 2000 Plan

(Completed in 1979)

Highlighted priority projects for construction including I-595 and I-75, plus expansion of major east-west roads to University Drive.

### 2015 Plan

(Completed in 1995)

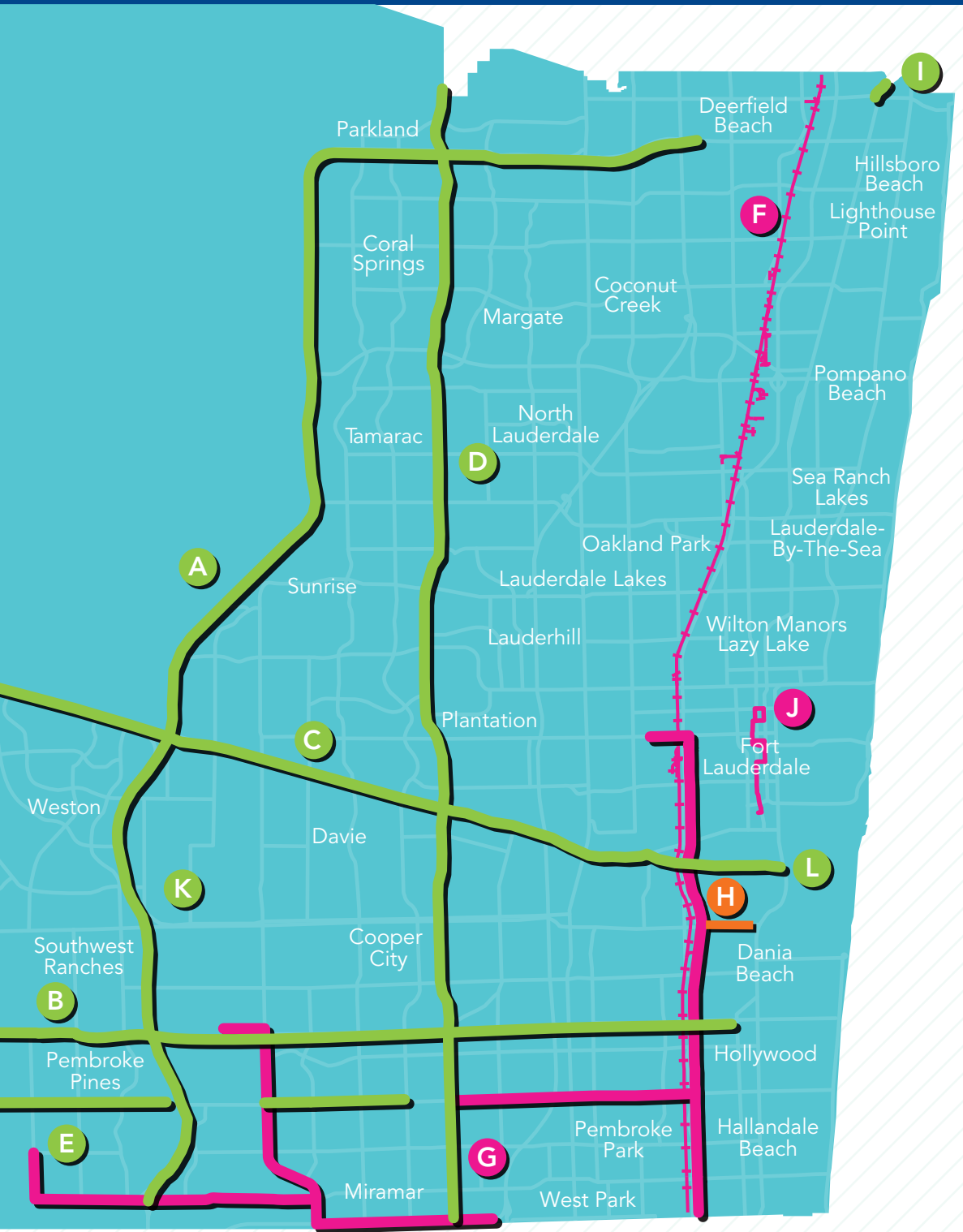
The first Long Range Transportation Plan to include transit improvements as part of the Cost Feasible Plan.

### Sources of Information

- 1) Report 5, Transportation in Broward County, Broward County Area Planning Board and Alan M. Vorhees and Associates, Inc; 1968
- 2) Estimated Population for Broward County in July 2016, accessed from US Census Bureau QuickFacts ; September 2017
- 3) Florida Department of Highway Safety and Motor Vehicles, Current Vehicles Registered; September 2017
- 4) Broward County Transit Facts, Broward County, accessed via web; May 2017
- 5) Comprehensive Annual Financial Report for Fiscal Year Ended June 30, 2016, South Florida Regional Transportation Authority, December 2016
- 6) Broward County, Fort Lauderdale-Hollywood International Airport, "About Us", accessed via the web: October 2017



# Completed PROJECTS



**(A) Sawgrass Expressway** ●  
 Identified in the 1985 and 2000 L RTPs  
 Completed in 1988

**(B) Sheridan Street  
 Widening & Extension** ●  
 Identified in the 1985, 2000, 2015, 2020,  
 2025, and 2030 L RTPs

**(C) I-595 & Managed Lanes** ●  
 Identified in the 1985 and 2000 L RTPs  
 Completed – 1991 (mainline) and 2014  
 (managed lanes)  
 Earnings – \$1.1 billion / Jobs – 26,000

**(D) University Drive  
 Countywide Widening** ●  
 Identified in 2000 and 2015 L RTPs  
 Completed in 1995

**(E) Pines Boulevard Widening** ●  
 Identified in 2000, 2015, and 2020 L RTPs

**(F) Tri-Rail Double Tracking** ●  
 Completed in 2007  
 Earnings – \$88 million / Jobs – 2,000

**(G) 95 Express Bus** ●  
 Identified in the 2015 L RTP  
 Completed in 2010

**(H) Fort Lauderdale –  
 Hollywood International  
 Airport Runway Extension** ●  
 Identified in the FLL 1994 Airport Master Plan  
 Completed in 2014  
 Earnings – \$1.42 billion / Jobs – 11,000

**(I) Dixie Highway Flyover** ●  
 Identified in 1985 L RTP  
 Funded through ARRA funds  
 Completed in 2012

**(J) Wave Streetcar** ●  
 Identified in the 2020 and 2040 L RTPs  
 Construction to begin in 2018

**(K) I-75 & Managed Lanes** ●  
 Identified in 2000 L RTP  
 Completed in 1986 (new roadway) &  
 Managed Lanes currently under construction  
 Earnings – \$140 million / Jobs – 3,500

**(L) Eller Drive Overpass** ●  
 Identified in 2030 L RTP  
 Completed in 2014  
 Earnings – \$40 million / Jobs – 1,000

## LEGEND

- Roadway Projects
- Airport Runway
- + + SFRC / Tri-Rail tracks
- Wave Streetcar Route
- 95 Express Routes



- Widening / New Road
- Transit Project
- Airport Improvements

# We are just getting **STARTED**



**TRI-RAIL EXTENSION**

**IMPROVED OPERATIONS**

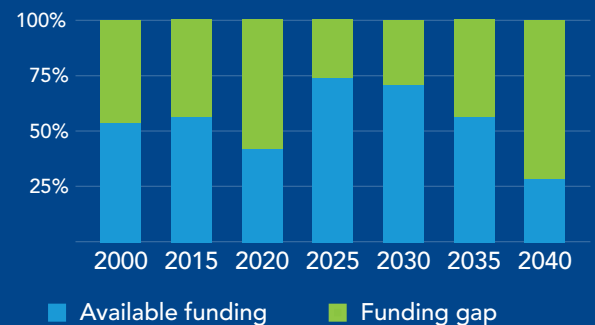
**WAVE EXTENSION**

**PREMIUM TRANSIT CORRIDORS**

The 2045 Long Range Transportation Plan effort has begun. It will update the list of transportation needs in Broward. Many projects lack sufficient funding. The highest priority projects will become part of the Financially Constrained Plan (Cost Feasible Plan) and advance toward implementation. Visit our website at [BrowardMPO.org](http://BrowardMPO.org) or call 954-876-0036 for updated information on the Long Range Transportation Plan.

### Funding Gap

Like all major metropolitan areas within the United States, there are more transportation needs than there is funding available for projects. The bar graph shows the history of local needs and the funding gaps identified in each Long Range Transportation Plan.



Celebrating  
Established 1977  
**40**  
Years Moving  
Broward

[BrowardMPO.org](http://BrowardMPO.org)

For complaints, questions or concerns about civil rights or nondiscrimination; or for special requests under the Americans with Disabilities Act, please contact: Christopher Ryan, Public Information Officer/Title VI Coordinator at (954) 876-0036 or [ryanc@browardmpo.org](mailto:ryanc@browardmpo.org).