



Broward Complete Streets Advisory Committee (CSAC) Meeting

Monday, March 13, 2017



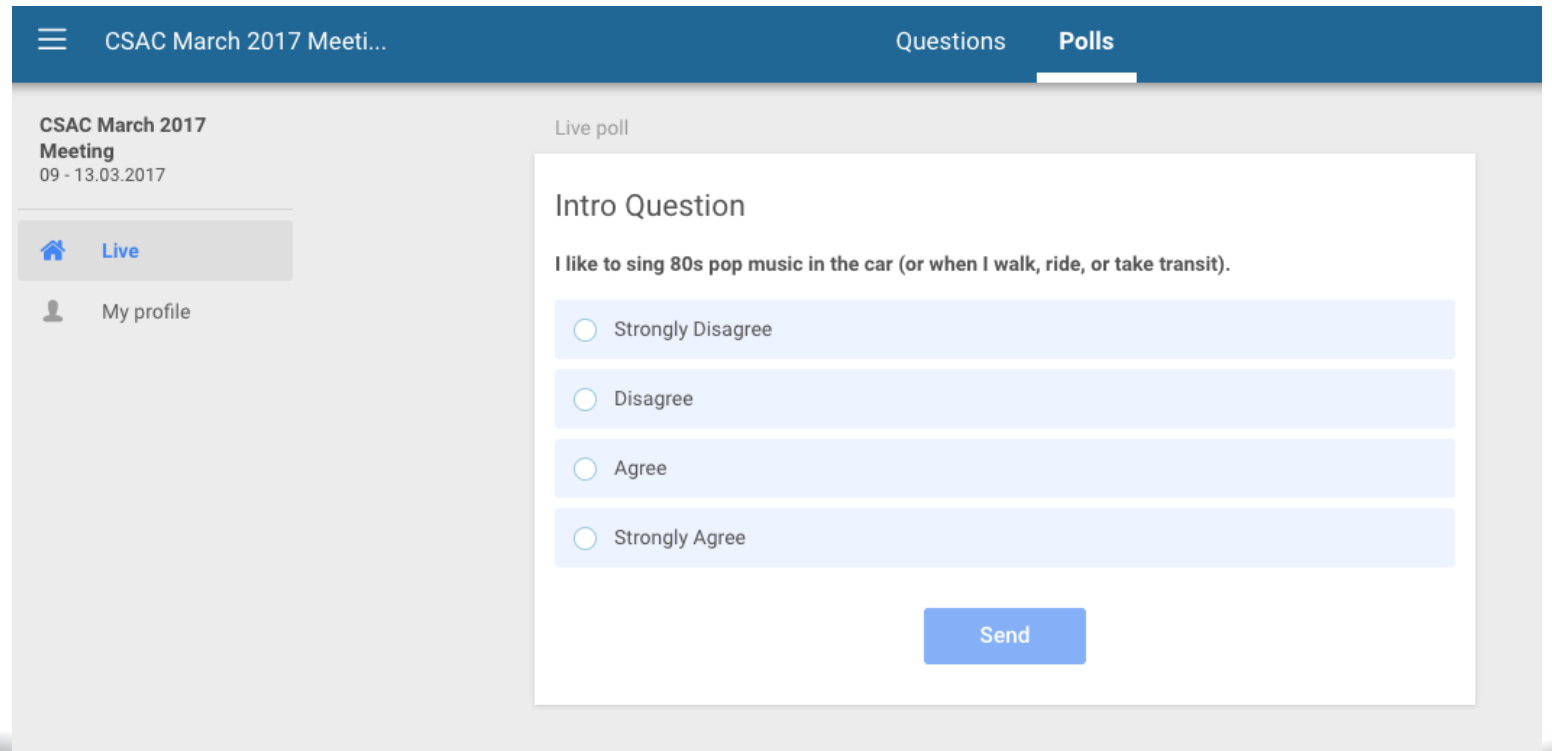
HOUSEKEEPING

- Please make sure you have signed in and have an agenda.
- This meeting is being recorded.
- Please introduce yourself and the organization(s) you represent.



INTERACTIVE MEETING POLLING

- Looking for your feedback during the meeting today
- Event code: 1449



The screenshot shows a web interface for a live poll. At the top, there is a navigation bar with a hamburger menu icon, the text "CSAC March 2017 Meeti...", and two tabs: "Questions" and "Polls". Below the navigation bar, the main content area is divided into two columns. The left column contains the event details: "CSAC March 2017 Meeting" and "09 - 13.03.2017". Below this, there are two menu items: "Live" (with a house icon) and "My profile" (with a person icon). The right column is titled "Live poll" and contains an "Intro Question": "I like to sing 80s pop music in the car (or when I walk, ride, or take transit).". Below the question are four radio button options: "Strongly Disagree", "Disagree", "Agree", and "Strongly Agree". At the bottom right of the poll area is a blue "Send" button.

MPO CURRENT EFFORTS

- Safe Streets Summit 2017 – Overview and Feedback
- Let's Go Biking! 2017 –
March 19, Pompano Community Center



SAFE STREETS SUMMIT 2017

- Two-Day Summit
 - 262 participants overall
 - 37 participants at pre-conference/mobile workshop
 - 32 participant at the Instituting Change Roundtable dinner
 - 20 Elected Officials attended
- Feedback
 - 99% of participant were satisfied or very satisfied
 - 99% are likely to attend 2018 Safe Streets Summit



LET'S GO BIKING! 2017

- Date: March 19, 2017
- Time: 9:00 AM
- Location: Pompano Community Park
- Activities: Leisurely Bike Ride, Bicycle Safety Activities, Giveaways, Music, Free Food, and More!

**LET'S GO
BIKING!** 

Sunday, **March 19**
9:00 a.m.

The 4th Annual Broward MPO Let's Go Biking! event will be held at **Pompano Community Park**. The event will feature a **leisurely bike ride**, **bicycle safety activities**, **giveaways**, **music**, **free food**, and **more!**



1900 NE 10th Street, Pompano Beach, FL 33060

For more information visit BrowardMPO.org or call (954) 876-0053





How Broward Communities Can Make the Most of Alert Today Alive Tomorrow to Reduce Pedestrian/Bicycle Fatalities

Presented by:

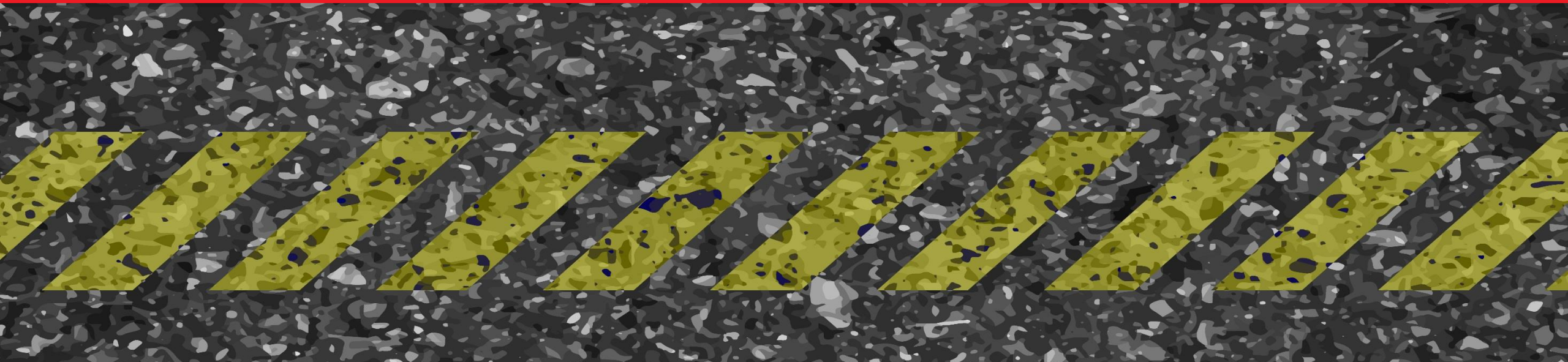
Jim Udvardy & Christin Shadoin

South Florida Commuter Services

Alert Today, Alive Tomorrow in South Florida



Spotlight on Pedestrian and Bicycle Safety



Broward County

Local Focus

- 1 Priorities
- 2 A Closer Look: Bicycle & Pedestrian Statistics
- 3 Local Alert Today, Alive Tomorrow Events & Initiatives
- 4 Looking Ahead: Opportunities
- 5 Partnerships



Pedestrian and bicyclist safety continues to be an area of concern in Broward County

SunSentinel SUBSCRIBE

ALL SECTIONS NEWS SPORTS BROWARD PALM BEACH ENTERTAINMENT CLASSIFIED 73°

Woman, 59, killed crossing State Road 7 identified; was on way to work at preschool



SunSentinel

Local News / Broward News / Tamarac News

Pedestrian, 65, struck and killed in Tamarac

By Erika Pesantes - Contact Reporter

SunSentinel SUBSCRIBE

ALL SECTIONS NEWS SPORTS BROWARD PALM BEACH ENTERTAINMENT CLASSIFIED 73°

Man, 22, struck, killed while walking on State Road 7 early Sunday



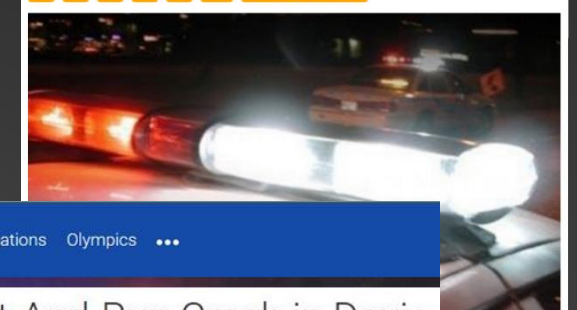
NEWS 72°

Pedestrian killed in Lauderdale Lakes hit-and-run

Broward Sheriff's Office traffic homicide detectives are investigating

Posted: 10:06 PM, October 23, 2016
Updated: 10:06 PM, October 23, 2016

Join the conversation



SunSentinel SUBSCRIBE

ALL SECTIONS NEWS SPORTS BROWARD PALM BEACH ENTERTAINMENT CLASSIFIED 73°

Bicyclist, 48, killed when struck by car in Lauderdale Lakes

By Mike Clary - Contact Reporter

SHARE THIS

Oakland Park man killed Sunday when bicycle hit by car in busy Lauderdale Lakes intersection, officials say

NOVEMBER 14, 2016, 6:04 PM | LAUDERDALE LAKES

A 48-year-old Oakland Park man was killed Sunday afternoon when the bicycle he was riding was struck by a car in a busy intersection, according to the Broward Sheriff's Office.

Ian Alex Collazo was heading west on Northwest 39th Street and approaching a red light at the intersection of Northwest 31st Avenue at 4:29 p.m. when he was hit in the middle northbound lane, deputies said.

SunSentinel SUBSCRIBE

ALL SECTIONS NEWS SPORTS BROWARD PALM BEACH ENTERTAINMENT CLASSIFIED 73°

Law enforcement agencies take to streets to encourage pedestrian, bicycle safety

By Rebecca Piccardo - Contact Reporter

Law enforcement agencies throughout Broward County are rallying to help reduce the number of traffic crashes and fatalities involving pedestrians and bicyclists through the "Alert Today, Alive Tomorrow" initiative

6 Home News Weather Investigations Olympics ...

Pedestrian Killed in Hit-And-Run Crash in Davie

Police are searching for a hit-and-run driver who struck and killed a man in Davie early Thursday.

NBC6.com



Unfortunately, despite the risk of serious injury or death, people continue to chance improper crossing throughout the County



*Photos taken
May 2016

Local Statistics

3,300+

Crashes involving
a Pedestrian or
Bicyclist

200+ Fatalities

740 Severely
Injured

60% of crashes occurred during daylight hours

Most crashes occurred between **3 to 6pm**

Crashes due to
speeding:

< 2%

Drug or Alcohol-Related
Crashes:

< 1%


*Statistics reflect crash data from Broward County over a 3-year period



It's **NOT** about the **NUMBERS.**

It's about saving **lives** and changing **behavior.**



A low-angle, close-up photograph of a person's legs and feet as they walk across a crosswalk. The person is wearing dark blue denim jeans and white sneakers with black and grey accents. The crosswalk consists of white stripes on a dark asphalt surface. A semi-transparent red rectangular box is overlaid on the left side of the image, containing white text.

In Broward County, Alert Today Florida will continue to launch compelling campaigns and initiatives targeted at addressing safety in the area.

Alert Today Alive Tomorrow in South Florida



SchoolPool Events



Community Outreach & Education



"Let's Go Biking" Bicycle Event

STOP ON RED
— FT. LAUDERDALE —
City of Fort Lauderdale, 1 W. Broward Blvd.

February 2, 2016 | 11:00 am - 2:00 pm | Speakers begin at 11:00 am

GUEST SPEAKERS
Melissa Wancall, National Coalition for Safer Roads
Tim Garing, Director of Broward County Transit
Gerry O'Reilly, Secretary, FDOT District Four
John P. "Jack" Sailer, Mayor, City of Fort Lauderdale

www.AlertTodayFlorida.com



City of Ft. Lauderdale "Stop on Red" Event



Student Safety Campaigns

Safety Campaigns

Alert Today Florida has run targeted safety campaigns for communities throughout South Florida.

Campaigns include:

Community Events • Education & Outreach •
Television & Radio • Outdoor Advertising • and
More!





Thinking Outside the Box

Innovative Safety Programs for South Florida

A new Pedestrian Rewards Program is in development to incentivize the public to use our walkways safely and encourage the use of alternate modes of transportation.

The program works through:

- Bluetooth Low Energy (BLE) Beacons
 - Devices that broadcast and trigger actions to nearby electronic devices, such as cellphones
 - Each beacon has a unique identifier
- Phone Rewards Mobile Application
 - Gives points for proper sequencing based on beacon's unique identifier
 - Each properly accessed beacon would add a count to a chain. After this reaches a certain number, a multiplier would increase the amount of points received

Next Steps

Alert Today Alive Tomorrow in Broward County

1

Identify Local Partners

2

Select Key Areas to Target

3

Set Timeline & Develop the Plan



Upcoming campaigns include Pedestrian Safety Mannequins and more

A high-angle, close-up shot of a person's legs and feet as they walk across a crosswalk. The person is wearing white trousers and black dress shoes. The crosswalk consists of white diagonal stripes on a dark asphalt surface. The lighting is bright, casting a distinct shadow of the person's legs onto the pavement. A semi-transparent red rectangular box is overlaid on the lower-left portion of the image, containing white text.

The success of our initiatives depends on working together with our partners in the community

Discussion



For more information, please contact:

South Florida Commuter Services

A Program of the Florida Department of Transportation

www.1800234ride.com

(800) 234-RIDE | (954) 731-0062



Equity in Complete Streets: How Broward Becomes an Example

Presented by:

Tim Vaske & David Francis

American Heart Association



Complete Streets and Health Equity What's the Connection?




Tim Vaske

State and Community Advocacy Manager,
Voices for Healthy Kids, American Heart
Association



David Frances

Community Advocacy Manager,
American Heart Association –
Greater Southeast Affiliate



A collaboration between the American Heart Association and the Robert Wood Johnson Foundation working to engage, organize and mobilize people to improve the health of their communities and help all children grow up at a healthy weight.

Our Focus

1

Ensuring all children enter kindergarten at a healthy weight

2

Making a healthy school environment the norm and not the exception across the United States

3

Making physical activity part of the everyday experience for children and youth

4

Making healthy foods the affordable, available, and desired choice in all neighborhoods

5

Eliminating consumption of sugar-sweetened beverages before the age of 5

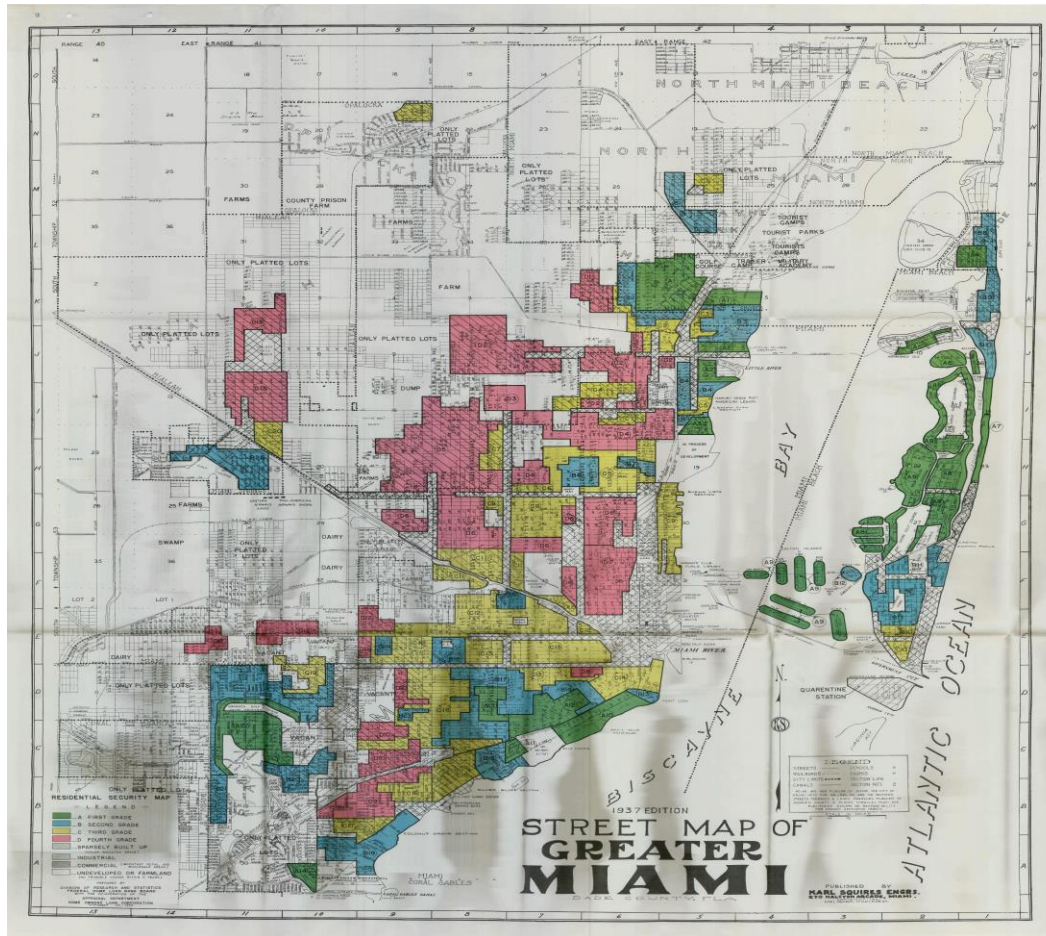
Policy Change for Community Physical Activity



- Bike and pedestrian funding
- Complete streets
- Safe Routes to School
- Shared use in schools



Redlining in Miami, FL



- Result of 1930's U.S. Federal Housing Administration Policy
 - Four Classifications were used: **Type A (Green)**, **Type B (Blue)**, **Type C (Yellow)** and **Type D (Red)**.
 - Red districts were neighborhoods that had any African-Americans
 - Used for determining home loan qualifications.
 - Fair Housing Act of 1968 made it illegal.

Source: Robert K. Nelson, LaDale Winling, Richard Marciano, Nathan Connolly, et al., "Mapping Inequality," *American Panorama*, ed. Robert K. Nelson and Edward L. Ayers, accessed March 7, 2017, <https://dsl.richmond.edu/panorama/redlining/#loc=12/25.8081/-80.2086&opacity=0.8&city=miami-fl>

Lasting Impact of Redlining

- Lack of access to housing loans
- Limited Transportation Investment
- Access to Healthy Food (Limited Supermarket Areas)
- Access to Affordable Healthcare (Medically Underserved Areas & Health Professional Shortage Areas)
- Limited Access to Employment Opportunities & Centers
- Environmental injustice and racism (exposure to toxins in the water, air, and ground)

Interstate Highway System: 1950's to 1990's



I-94 Construction through Rondo, 1966

Photo Source: MN Historical Society



I-94, St. Paul, MN, Dec. 1968

Photo Source: MN Historical Society

Complete Streets Policies and Approaches

- More than 1,200 Complete Streets policies have been passed since 2005
- Most policies address the needs of all users and all modes, to varying extent policies define users.
- Varies across the country on level of implementation, enforcement and reporting.
- While implementation has been successful in many parts of the country, it has not always been equitable.

Complete streets Policies: Understanding Context and Equity

Study Team: University of Illinois at Chicago; Institute for Health Research and Policy

Jamie Chriqui, PhD (PI)

Emily Thrun, MUPP, GSAV (urban planner)

Meredith Perks, MUPP cand. (RA)

Julien Leider, MA (data manager and analyst)

Funding

Healthy Eating Research, a national program of the Robert Wood Johnson Foundation

National Cancer Institute (part of an R01 where we compiled the policies)

Centers for Disease Control and Prevention, Physical Activity Policy Research Network+ Collaborating Center Grant (to co-fund KI work)

Complete streets Policies: Understanding Context and Equity

Rapid Response Research Project – Concluding October 2016

1. Policy Analysis of 800 plus complete streets policies, as of May 2015
2. Qualitative Study exploring the implementation of the policies and assessing what, if any, equity approaches are being taken.

<http://go.uic.edu/TransportationEquity>

Policy Analysis of Complete Streets Policies – Key Findings

Jurisdiction	# adopting CS policy (% within jurisdiction type)	# adopters explicitly addressing equity in the policy (% of adopters)
Municipalities	649/20,733 (3.1%)	123/649 (19.0%)
Counties/Consolidated Cities	67/3,041 (2.2%)	9/67 (13.4%)
Towns	81*	8/81 (9.9%)
Metropolitan planning organizations	57*	15/57 (26.3%)
States	31/50 (62%)	4/31 (12.9%)
Overall	828	147/828 (17.8%)

Note: The overall row is not the sum of the rows above it as it only counts municipalities crossing county boundaries once but counts state and state Department of Transportation policies separately.

- We do not have appropriate denominator data for these jurisdiction types

Source: Chriqui, et al., unpublished data

Policy Analysis of Complete Streets Policies – Key Findings

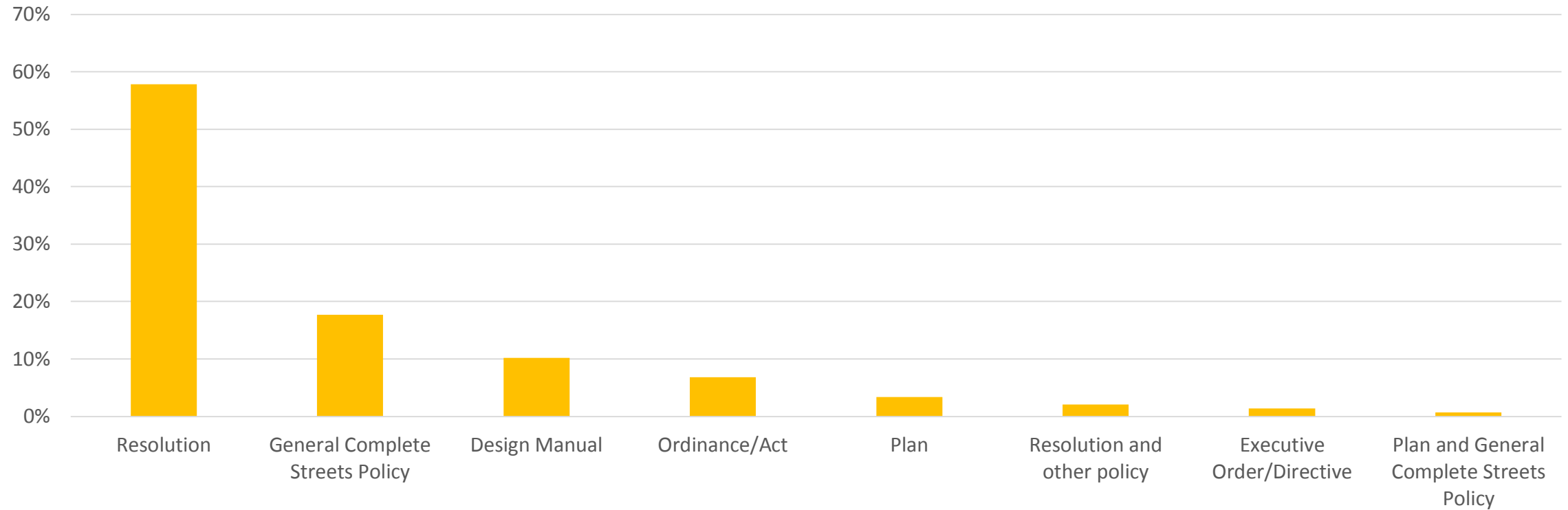
- Complete Streets policies are:
 - Less likely in municipalities with small or medium as compared to large **population sizes**
 - Associated with **greater rates of walking or taking public transit to work**
 - There are **no significant regional differences or in the median age of the population** in municipal Complete Streets policy adoption.



www.pedbikeimages.org/ Laura Sandt

Source: Chriqui, et al., unpublished data

PREVALENCE OF explicit EQUITY language BY POLICY TYPE



N = 147 states, MPOs, counties/consolidated cities, municipalities, and towns with explicit equity language

Source: Chriqui, et al., unpublished data



Thrun E, Perks M, Chriqui J. Prioritizing Transportation Equity through Complete Streets. Research Report. Chicago, IL: Institute for Health Research and Policy, University of Illinois at Chicago, 2016. Available at: <http://go.uic.edu/TransportationEquity>

“Prioritizing Transportation Equity through Complete Streets”

Successes and Challenges:

1. Focusing on equity is the “right thing to do”
2. Stakeholder communication about what equity means is critical
3. Communities are trying to ensure equitable access for all neighborhoods
4. Equity can be prioritized through other policies and programs
5. Funding and resources are vital to successful equitable project prioritization
6. Project prioritization is based on the most pressing needs

Source: Chriqui, et al., unpublished data

Connecting with the Public Health Community

1. Connect with the community to bring the community voice into the transportation planning discussions. **Learn the history.**
2. **Be the Expert.** Connect the transportation leaders with the work happening around Community Health Assessments (CHAs), chronic disease planning.
3. **Build public support** and awareness around the needs and disparities in relation to how the streets and communities are designed and built.
4. **Connect other stakeholders** into the policy work, including social justice, housing, education, aging, healthy food access and healthcare advocates.

Connecting with the Public Health Community

6. **Be prepared** for tough discussions around the need for equitable implementation and also around community concerns around displacement / gentrification.
7. Help communities identify their spokespeople and help those spokespeople **prepare the story**.
8. Leverage your subject matter expertise with media, community groups and decision-makers. **Helps others leverage** their own subject matter expertise.
9. Ensure that municipalities and states develop performance measures around equitable implementation; **ensure there is accountability** with those measures.

Examples of Equity within Transportation Policy

- **Los Angeles County Just Growth Initiative**
 - ***“Equity opportunity zones”*** — targeted zones for strategic transportation investment based off the following criteria:
 1. Race/Ethnicity
 2. Household Income
 3. Households with low vehicle ownership
 - <https://investinginplace.files.wordpress.com/2016/09/investing-in-place-transportation-equity-policy-brief-1.pdf>

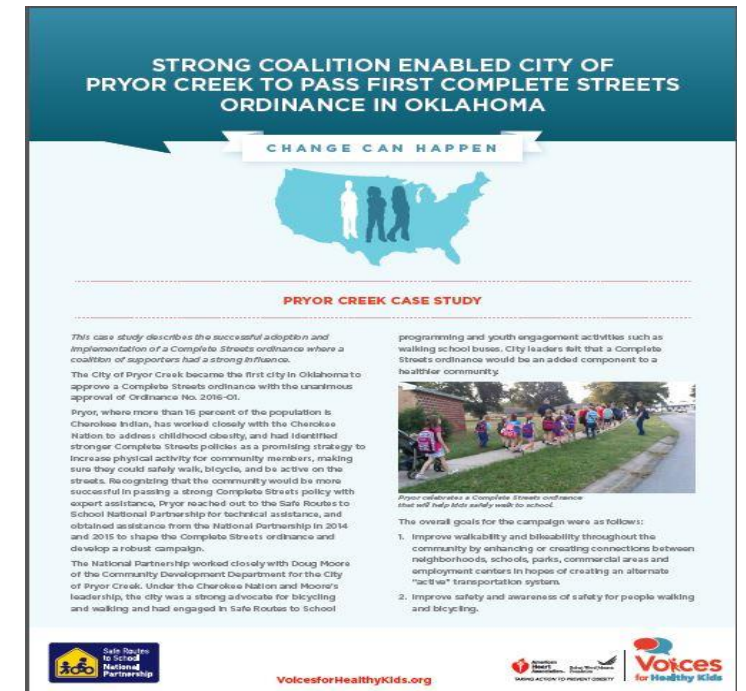
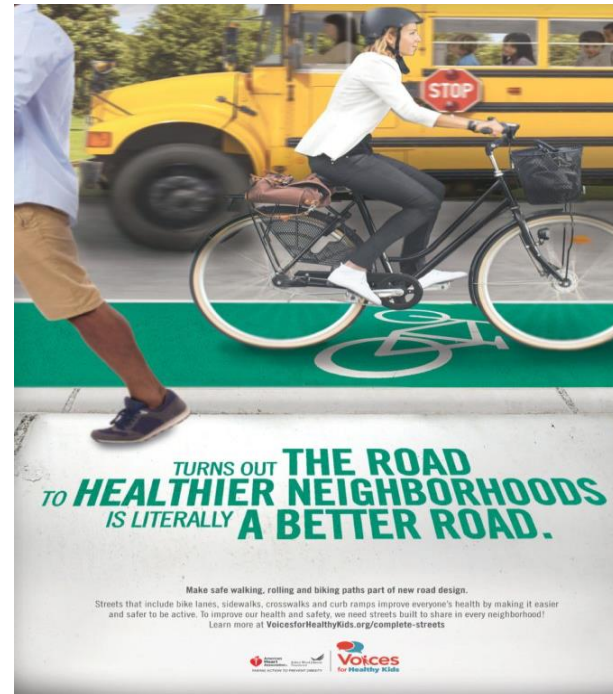
Examples of Equity within Transportation Policy

- **NashvilleNext Initiative – Nashville, TN**
 - Connects the complete streets policy and implementation to the NashvilleNext Masterplan which incorporates equity principles around accessibility to transportation, housing, employment opportunities, healthcare, education, healthy food access...
 - <http://www.nashville.gov/Government/NashvilleNext.aspx>

Examples of Equity within Transportation Policy

- **National Complete Streets Coalition – Policy Equity Taskforce**
 - Ad-hoc committee exploring future updates on policy guidance, ten ideal elements of complete streets, and policy grading matrix; incorporating equity and implementation.
 - Incorporates UIC research as well as feedback from Voices for Healthy Kids, AARP, National Association of Realtors, planner and engineers, and other key stakeholders.
 - Spring 2017

Voices for Healthy Kids Complete Streets Toolkit:

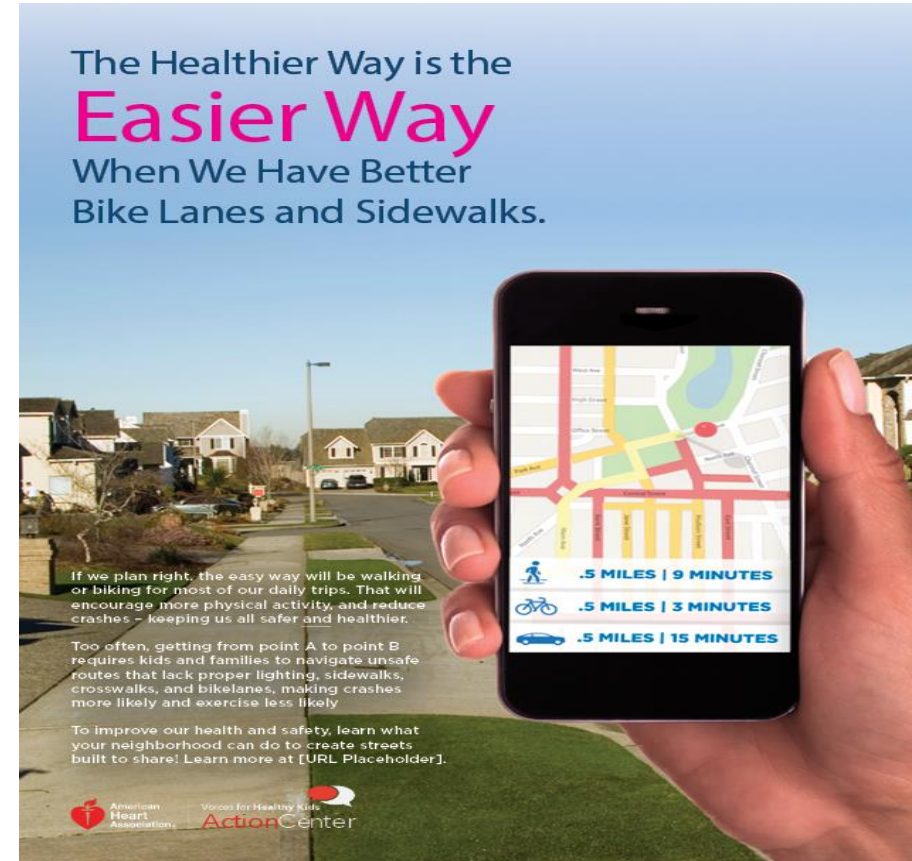


<http://completestreets.voicesforhealthykids.org/>

Voices for Healthy Kids Complete Streets Toolkit:



<http://completestreets.voicesforhealthykids.org/>





Tim Vaske, *State and Community Advocacy Manager, Voices for Healthy Kids*
Tim.Vaske@heart.org | 773.951.5671

David Francis, Community Advocacy Director, American Heart Association – Greater Southeast Affiliate
David.Francis@heart.org | 727-563-8192



Every Place Counts Leadership Academy: An Initiative of USDOT

Presented by:

Alena Alberani

Broward Regional Health Planning Council

Every Place Counts Leadership Academy: Transportation Toolkit

U.S. Department of Transportation

Alena Alberani, LEED AP ND

Healthy Eating Active Living Program Manager

BRHPC TOUCH

Broward Regional Health Planning Council

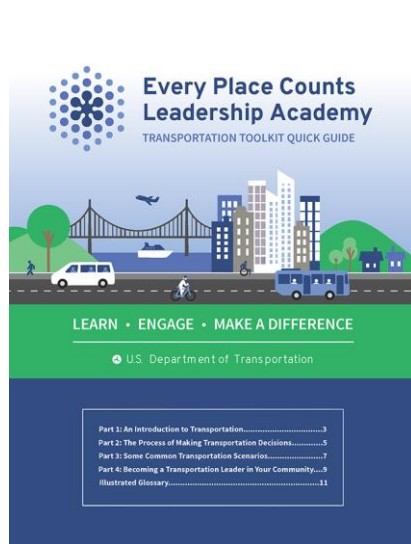
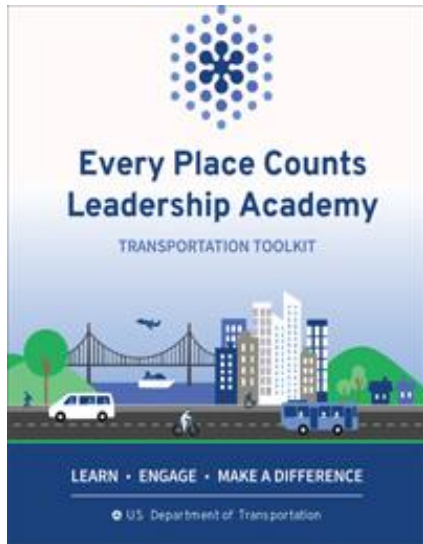


www.brhpc.org



Transportation Toolkit: keys to drive change!

- ▶ Do you have a transportation idea, concern, problem or challenge?
- ▶ Do you want to participate in the process of making decisions about transportation plans and projects?
- ▶ Do you want to make your voice heard?
- ✓ **Resources: Links to contact local representatives and agencies including Mayors, MPO, DOT, FAA, FRA, FTA, DOCR**
- ✓ **Transportation acronyms and terms**
- ✓ **Summary with one concept to LEARN, one way you can ENGAGE and one way to MAKE A DIFFERENCE**

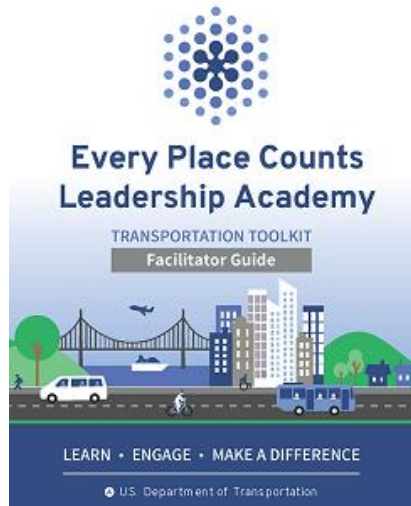
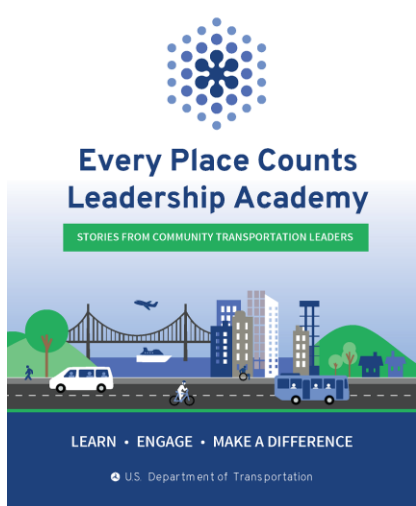


1. Transportation Toolkit 94 pages

2. Quick Guide 12p

3. Stories from Community Transportation Leaders 17p

4. Facilitator Guide 51p



Transportation Toolkit

Part 1: An Introduction to Transportation

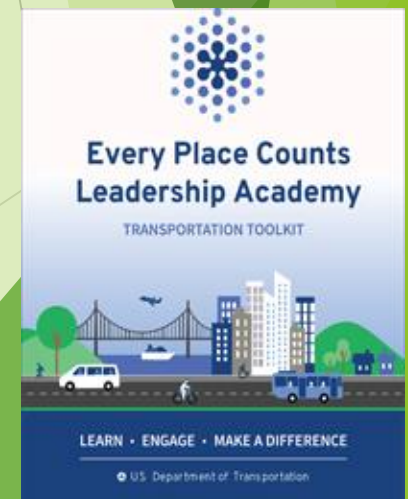
Part 2: The Process of Making Transportation Decisions

Part 3: Some Common Transportation Scenarios

Part 4: Becoming a Transportation Leader in Your Community

Illustrated Glossary:

- Who's Who in Transportation
- What's What in Transportation
- Transportation Equity
- Public Involvement in Transportation



Quick Guide

Part 1: An Introduction to Transportation

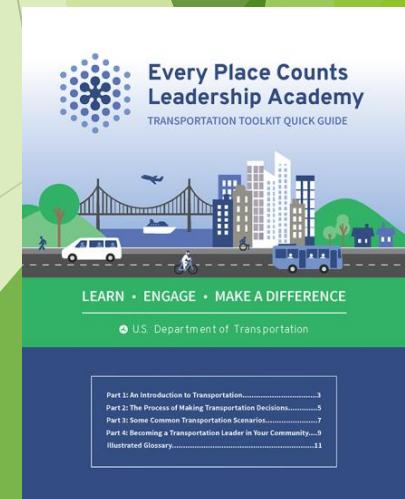
Part 2: The Process of Making Transportation Decisions

Part 3: Some Common Transportation Scenarios

Part 4: Becoming a Transportation Leader in Your Community Illustrated Glossary

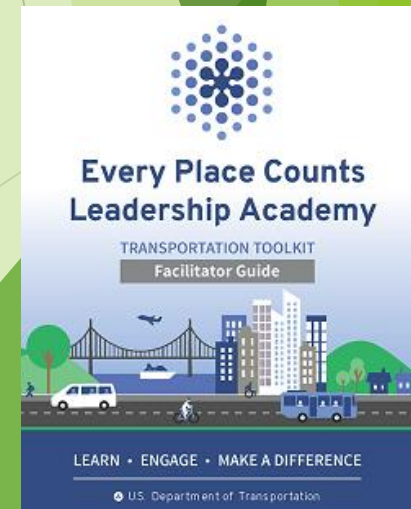
Illustrated Glossary:

- Who's Who in Transportation



Facilitator Guide

- Introduction
- History of the Academy
- Facilitation Tasks
- Creating a Welcoming Atmosphere
- Icebreaker • “Getting to Know You BINGO”
- **Session 1:** An Introduction to Transportation • “Every Experience Counts”
- **Session 2:** The Process of Making Transportation Decisions • “Steps in the Process”
 - Presentation: The Five Steps of Transportation Decision-making
- **Session 3:** Who's Who in Transportation Decisions • Presentation: Transportation Scenarios
 - “Roleplay Decision-Making Scenarios”
- **Appendix:**
 - Sample BINGO Card
 - "Steps in the Process" Pieces
 - Transportation Toolkit Scavenger Hunt
 - Map of EveryPlace, USA
 - Scenario Character Descriptions



Stories from Community Transportation Leaders

Inspirational stories of individuals who:

- **Saw** a transportation problem in their community,
- **Got involved** in the decision-making process,
- **Rallied** their communities, and
- **Created change**

- ✓ Rosa Coleman, Pulse Bus Rapid Transit (BRT), Richmond
- ✓ David and Darius Young, Hybrid and Clean Diesel Buses, Detroit
- ✓ Margaret Frisbie, Chicago Riverwalk
- ✓ Denise Johnson, Re-Connect West Baltimore
- ✓ Eva Olivas South Central Light Rail Extension Project, Phoenix



Thank you!

Alena Alberani

Aalberani@brhpc.org

Broward Regional Health Planning Council

BRHPC

HEALTH & HUMAN SERVICE INNOVATIONS

www.brhpc.org



MEMBER UPDATES



THANK YOU!

- Any Final Questions?
- Next CSAC Meeting – May 8, 2017
- Don't Forget to Visit the Complete Streets webpage at:
www.browardmpo.org/projects-studies/complete-streets
- If you have any questions or comments, please contact Ricardo Gutierrez at 954.876.0044

